

STANDARD INSTRUMENT DEPARTURES (SID) JUSTY THREE DEPARTURE (RNAV) AVALON, VIC (YMAV)

21 MAR 2024

ATIS 118.2 116.1	AWIS (AH) 116.1	AV APP 133.55	TWR 120.1	FIA (AH) ML CEN 135.7	CTAF+AFRU (AH) 120.1	AFRU+PAL (AH) 120.1	Bearings are Magnetic Elevations in FEET AMSL
---------------------	--------------------	------------------	--------------	--------------------------	-------------------------	------------------------	--

NOT TO SCALE

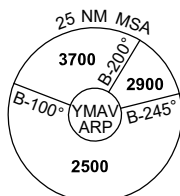


MELBOURNE
ML VOR/DME 114.1

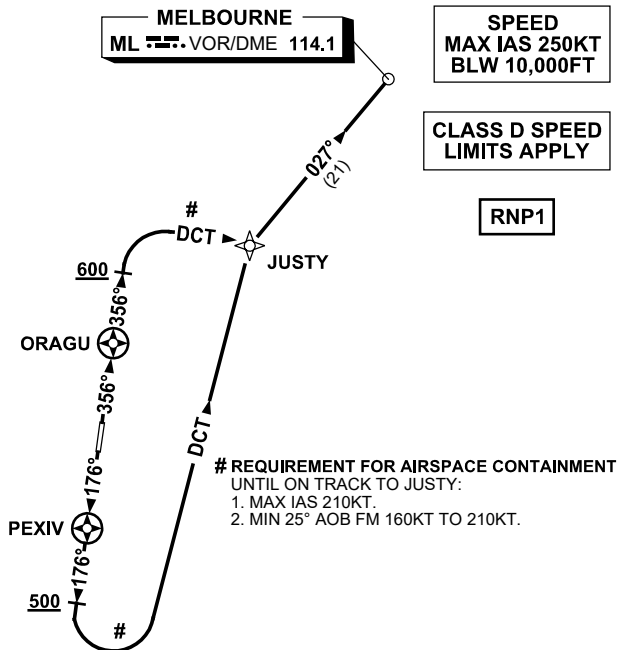
SPEED
MAX IAS 250KT
BLW 10,000FT

**CLASS D SPEED
LIMITS APPLY**

RNP1



10 NM MSA 2500



JUSTY THREE DEPARTURE

RWY 18

- GRAD 3.3%
- Track 176°
- AT or ABV 500ft but not before PEXIV turn LEFT, track DCT to JUSTY #
- Turn RIGHT, track 027° to ML, thence as cleared

RWY 36

- GRAD 3.3%
- Track 356°
- AT or ABV 600ft but not before ORAGU turn RIGHT, track DCT to JUSTY #
- Turn LEFT, track 027° to ML, thence as cleared