

**STANDARD INSTRUMENT DEPARTURES (SID)
JUSTY THREE DEPARTURE (RNAV)
AVALON, VIC (YMAV)**

21 MAR 2024

ATIS 118.2 116.1	AWIS (AH) 116.1	AV APP 133.55	TWR 120.1	FIA (AH) ML CEN 135.7	CTAF+AFRU (AH) 120.1	AFRU+PAL (AH) 120.1	Bearings are Magnetic Elevations in FEET AMSL
---------------------	--------------------	------------------	--------------	--------------------------	-------------------------	------------------------	--

NOT TO SCALE

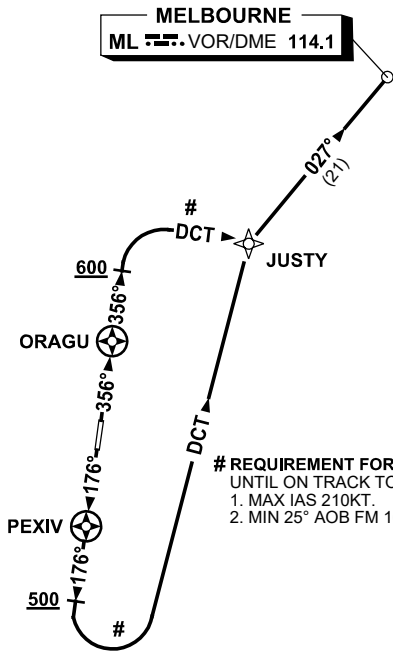


MELBOURNE
ML VOR/DME 114.1

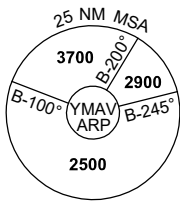
SPEED
MAX IAS 250KT
BLW 10,000FT

CLASS D SPEED
LIMITS APPLY

RNP1



REQUIREMENT FOR AIRSPACE CONTAINMENT
UNTIL ON TRACK TO JUSTY:
1. MAX IAS 210KT.
2. MIN 25° AOB FM 160KT TO 210KT.



10 NM MSA 2500

JUSTY THREE DEPARTURE

RWY 18

- GRAD 3.3%
- Track 176°
- AT or ABV 500ft but not before PEXIV
turn LEFT, track DCT to JUSTY #
- Turn RIGHT, track 027° to ML,
thence as cleared

RWY 36

- GRAD 3.3%
- Track 356°
- AT or ABV 600ft but not before ORAGU
turn RIGHT, track DCT to JUSTY #
- Turn LEFT, track 027° to ML,
thence as cleared

Changes: DME REFERENCE REMOVED, NEW WAYPOINTS, DEP INSTRUCTION, Editorial.

