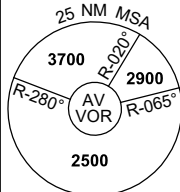


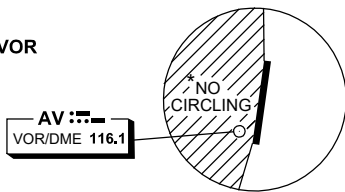
# DME or GNSS ARRIVAL PROCEDURES AVALON, VIC (YMAV)

21 MAR 2024

ATIS 118.2 116.1	AWIS (AH) 116.1	AV APP 133.55	TWR 120.1	FIA (AH) ML CEN 135.7	CTAF+AFRU (AH) 120.1	AFRU+PAL (AH) 120.1	Bearings are Magnetic Elevations in FEET AMSL
---------------------	--------------------	------------------	--------------	--------------------------	-------------------------	------------------------	--

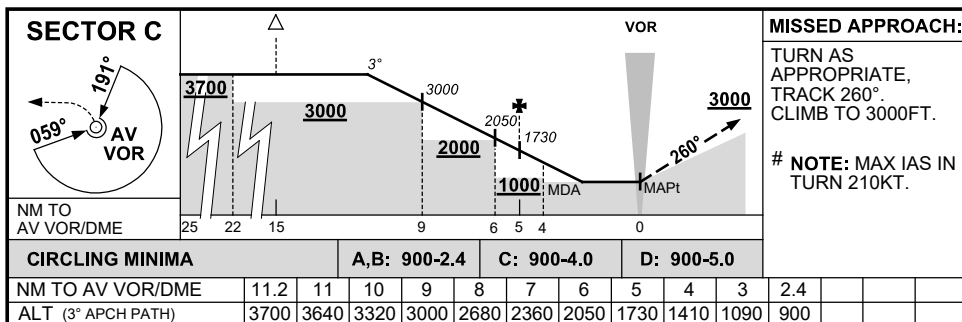
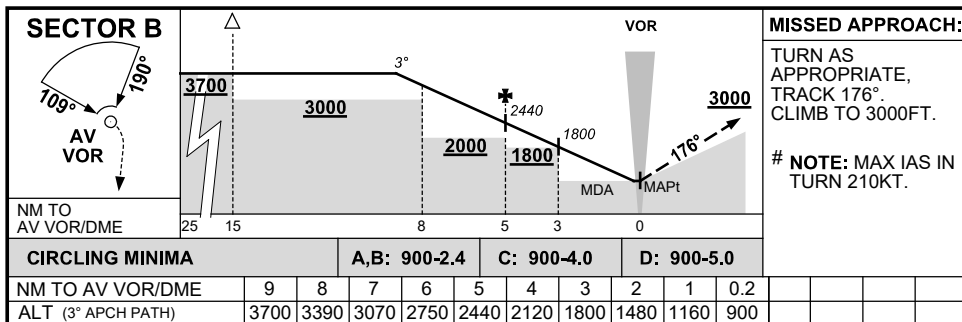
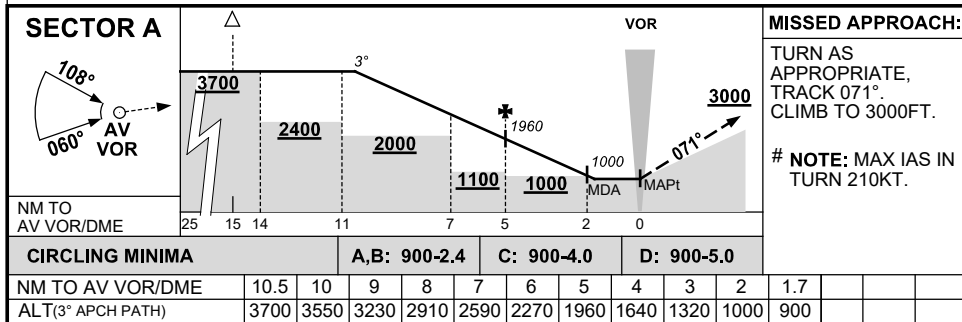


## DME USING AV DME REFERENCE WAYPOINT AV VOR



10 NM MSA 2500

AD ELEV 35



Changes: SECTOR A MNM SEGMENT ALT.

MAVDG01-178