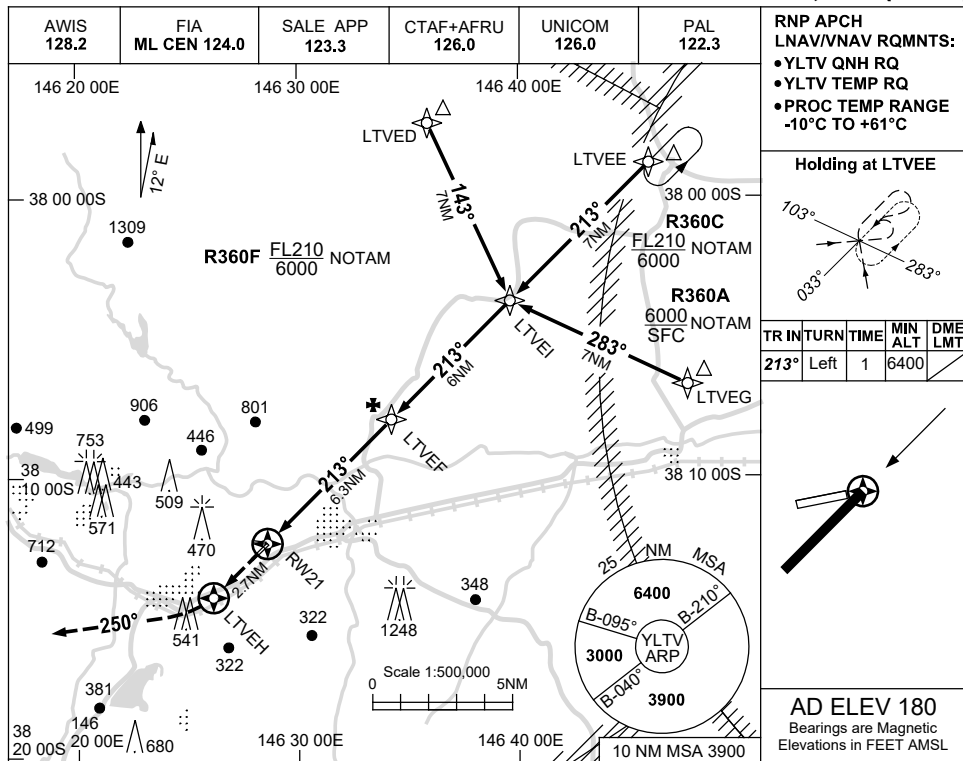


USE QNH

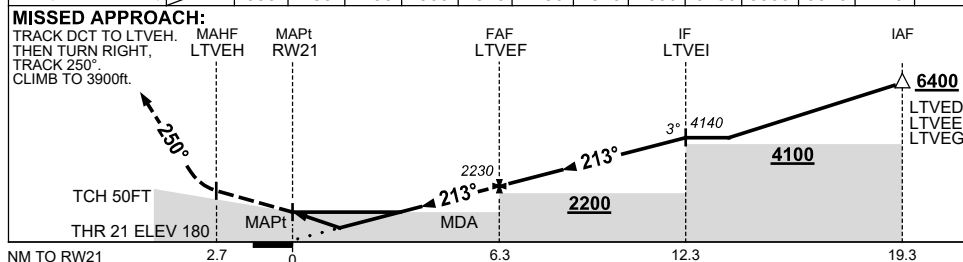
RNP RWY 21

30 NOV 2023

LATROBE VALLEY, VIC (YLTV)



| | | | | | | | | | | | | | | |
|--------------------|------|-----|-----|------|------|------|-------|------|------|------|------|------|-------|--|
| NM TO NEXT WPT | RW21 | 1 | 1.6 | 3 | 4 | 5 | LTVEF | 1 | 2 | 3 | 4 | 5 | LTVEI | |
| ALT (3° APCH PATH) | | 550 | 750 | 1190 | 1500 | 1820 | 2230 | 2540 | 2860 | 3180 | 3500 | 3820 | 4140 | |



NOTES

- MAX IAS:
INITIAL : 210KT.
- CAUTION:**
INITIAL & INTERMEDIATE SEGMENT OVERLAP HOLDING & INITIAL SEGMENTS FOR YWLSL RNP RWY 09 PROC.
- INITIAL SEGMENTS INFRINGE R360A/C/F; AWY CLR RQ.

| CATEGORY | A | B | C | D |
|-----------|---------------|---|-----------------|----------------|
| LNAV/VNAV | 550 (370-2.1) | | | NOT APPLICABLE |
| LNAV | 750 (570-3.2) | | | |
| CIRCLING | 980 (800-2.4) | | 1470 (1290-4.0) | |
| ALTERNATE | (1300-4.4) | | (1790-6.0) | |

Changes: R359A-G DELETED, R360A-F ADDED, NOTE 3, Editorial.

LTVGN02-177