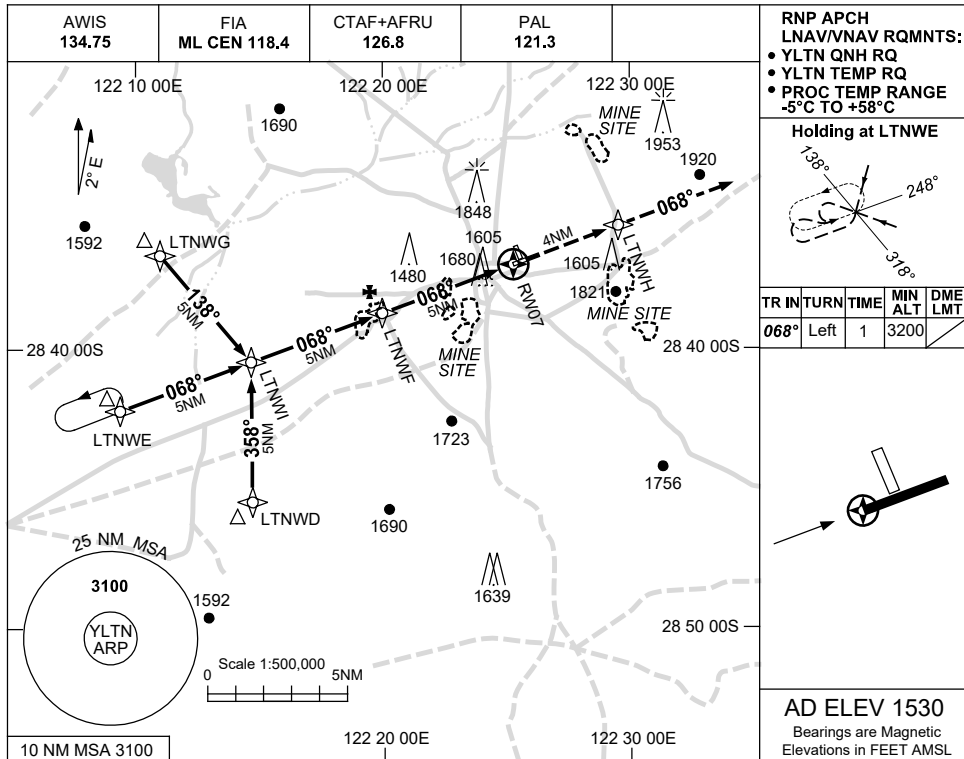


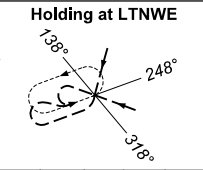
USE QNH

RNP RWY 07
LAVERTON, WA (YLTN)

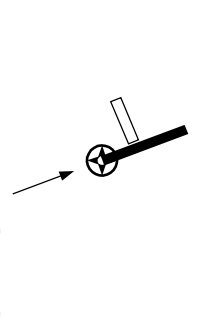
7 SEP 2023



RNP APCH
LNAV/VNAV RQMNTS:
• YLTN QNH RQ
• YLTN TEMP RQ
• PROC TEMP RANGE
-5°C TO +58°C

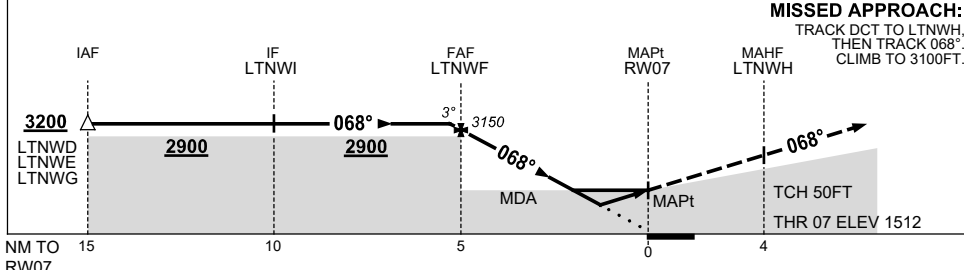


| TR IN | TURN | TIME | MIN ALT | DME LMT |
|-------|------|------|---------|---------|
| 068° | Left | 1 | 3200 | |



AD ELEV 1530
Bearings are Magnetic
Elevations in FEET AMSL

| NM TO NEXT WPT | 0.1 | LTNWF | 4 | 3 | 2 | 1.5 | 1.2 | RW07 | | | | |
|--------------------|------|-------|------|------|------|------|------|------|--|--|--|--|
| ALT (3° APCH PATH) | 3200 | 3150 | 2840 | 2520 | 2200 | 2050 | 1930 | | | | | |



NOTES

| CATEGORY | A | B | C | D |
|-----------|----------------|----------------|----------------|----------------|
| LNAV/VNAV | | 1930 (418-2.3) | | NOT APPLICABLE |
| LNAV | | 2050 (538-3.0) | | |
| CIRCLING | 2250 (720-2.4) | | 2400 (870-4.0) | |
| ALTERNATE | | (1220-4.4) | (1370-6.0) | |

1. MAX IAS:
INITIAL : 210KT.

Changes: CHART TITLE, PBN SPECIFICATION BOX, Editorial. LTNGN02-176