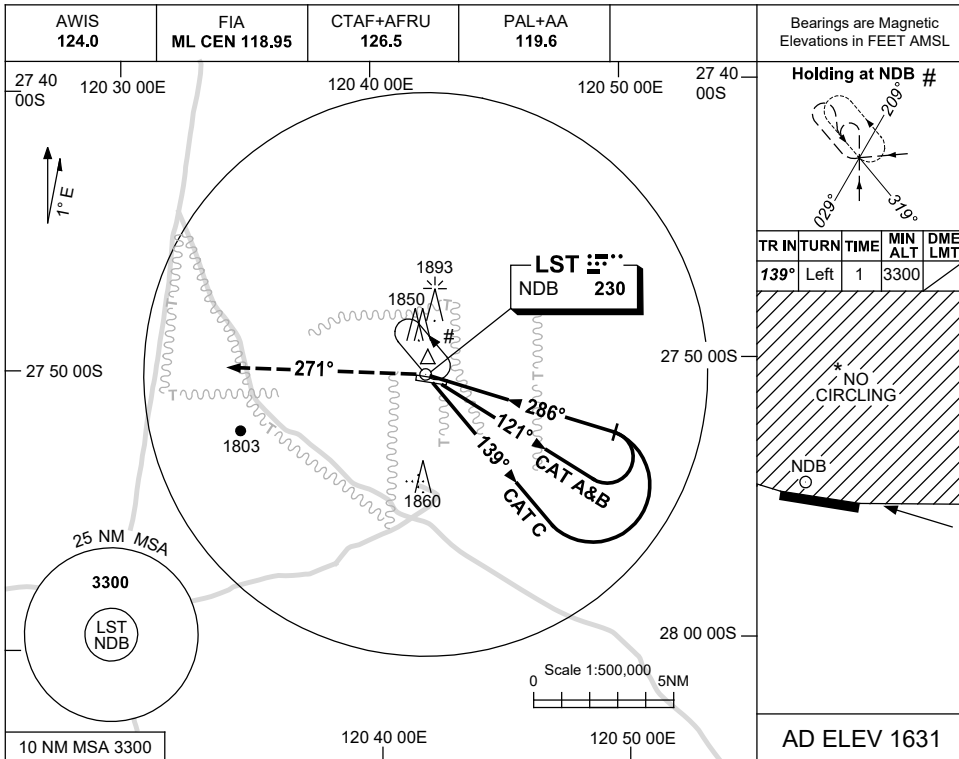


USE QNH

NDB RWY 28
LEINSTER, WA (YLST)

7 SEP 2023



Holding at NDB #

TR IN	TURN	TIME	MIN ALT	DME LMT
139°	Left	1	3300	

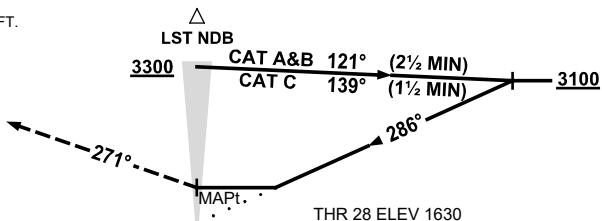
* NO CIRCLING

NDB

AD ELEV 1631

DME DIST	NOT APPLICABLE								
ALT									

MISSED APPROACH:
TRACK 271°
CLIMB AND MAINTAIN 3300FT.



NOTES

1. MAX IAS:
INITIAL : 210KT.
- *2. NO CIRCLING NORTH OF RWY 10/28.
- #3. ACFT MUST CTC YBLU PRIOR TO HOLD ON CTAF.
CAUTION: PROC IS OVERLAI BY YBLU RNP RWY 01.

CATEGORY	A	B	C	D
S-I NDB	2250 (619-3.5)			NOT APPLICABLE
CIRCLING *	2350 (719-2.4)	2450 (819-4.0)		
ALTERNATE	(1219-4.4)		(1319-6.0)	

Changes: NOTE 3.

LSTNB02-176