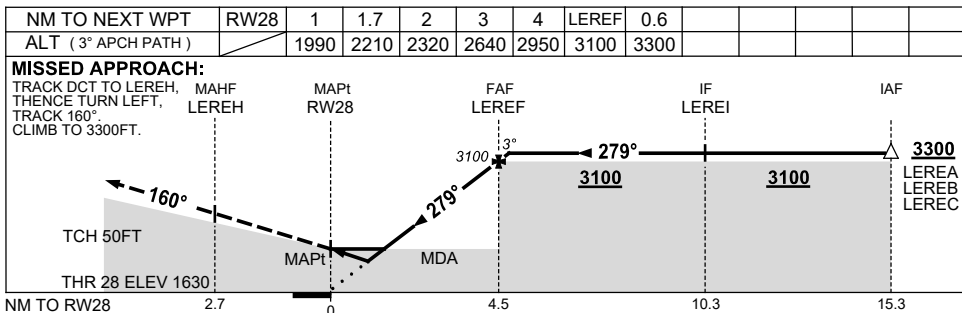
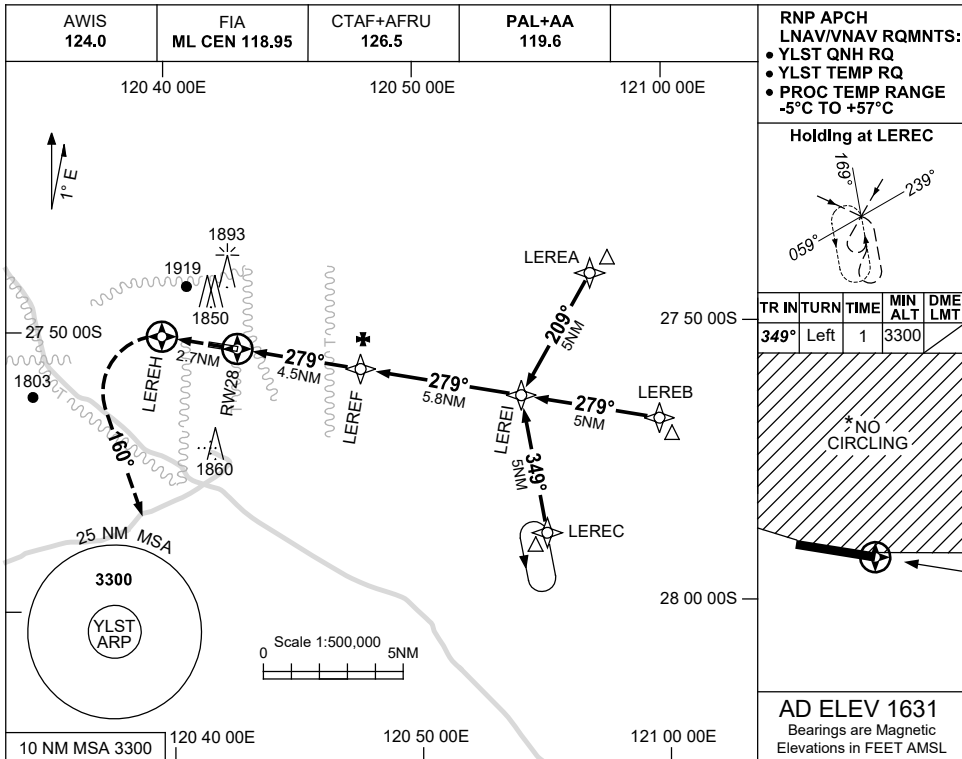


USE QNH

RNP RWY 28  
LEINSTER, WA (YLST)

7 SEP 2023



**NOTES**

CATEGORY	A	B	C	D
LNAV/VNAV		1990 (360-2.0)		NOT APPLICABLE
LNAV		2210 (579-3.3)		
CIRCLING *	2350 (719-2.4)		2450 (819-4.0)	
ALTERNATE		(1219-4.4)	(1319-6.0)	

- MAX IAS: INITIAL : 230KT.
  - NO CIRCLING NORTH OF RWY 10/28.
- CAUTION:** PROC IS OVERLAI BY YBLU RNP RWY 01.

Changes: CHART TITLE, PBN SPECIFICATION BOX, NOTE 2, Editorial.

LSTGN02-176