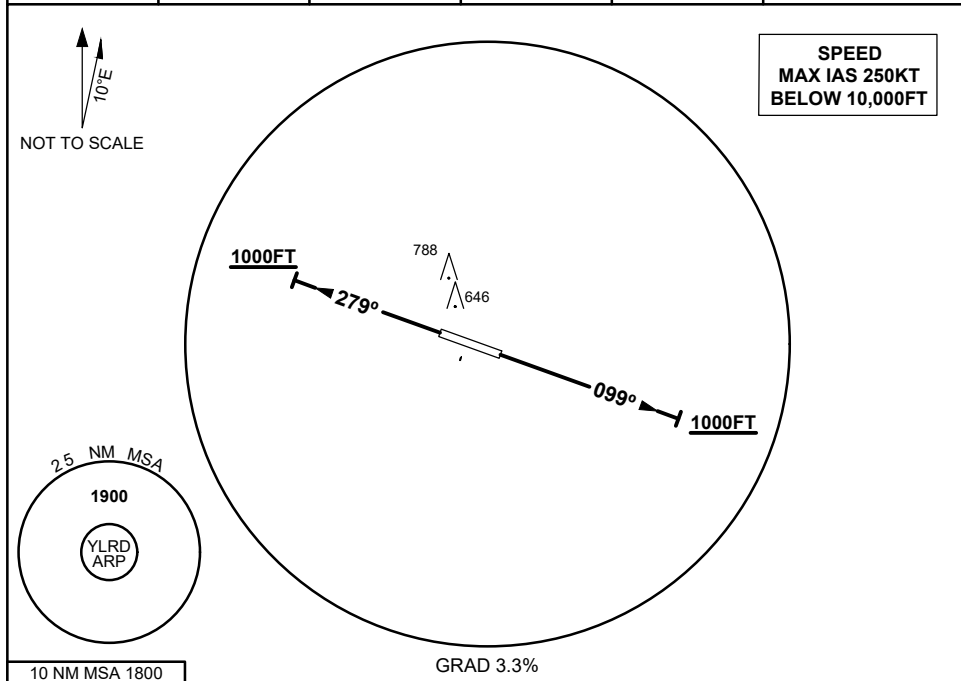


**STANDARD INSTRUMENT DEPARTURES (SID)
LIGHTNING RIDGE ONE DEPARTURE
LIGHTNING RIDGE, NSW (YLRD)**

16 JUN 2022

FIA BN CEN 127.1	CTAF 126.7	PAL + AA 121.3			Bearings are Magnetic Elevations in FEET AMSL
----------------------------	----------------------	--------------------------	--	--	--



LIGHTNING RIDGE ONE DEPARTURE

RWY 10

- Track 099°
- AT or ABV 1000FT turn as required
- Continue climb to 1900FT
- Intercept flight plan route

RWY 28

- Track 279°
- AT or ABV 1000FT turn as required
- Continue climb to 1900FT
- Intercept flight plan route

Changes: PAL+AA, Editorial

LRDDP01-171