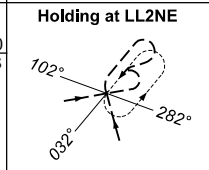
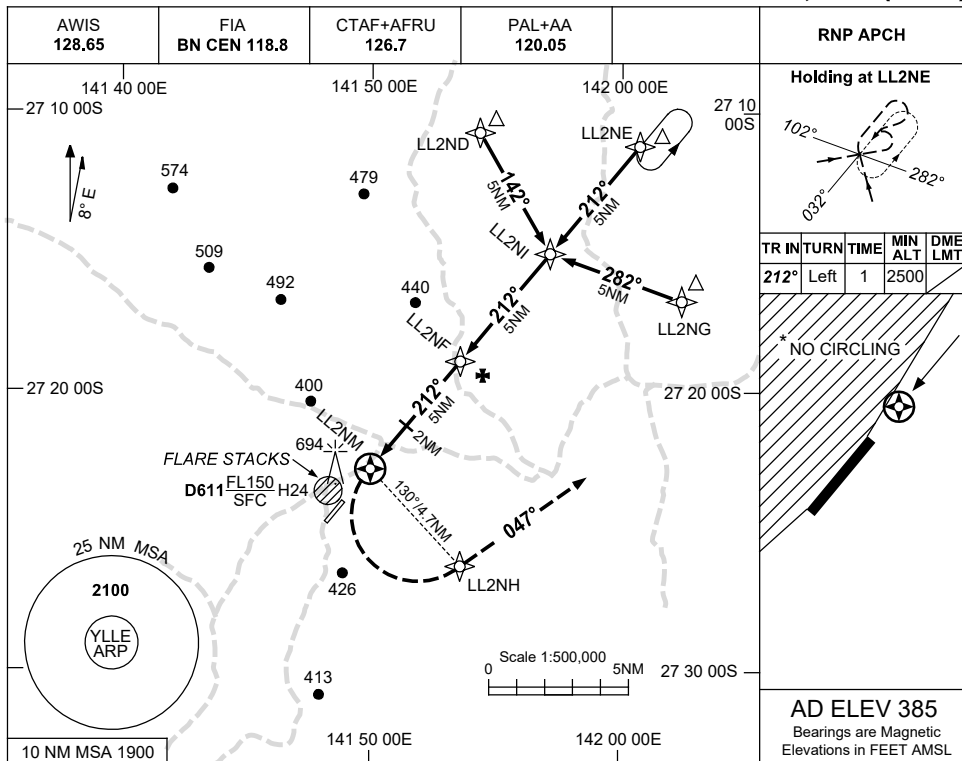


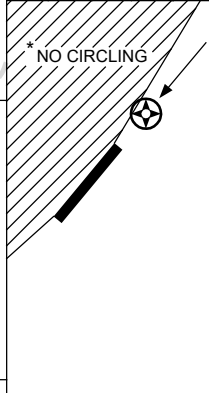
USE QNH

RNP RWY 21  
BALLERA, QLD (YLLE)

13 JUN 2024

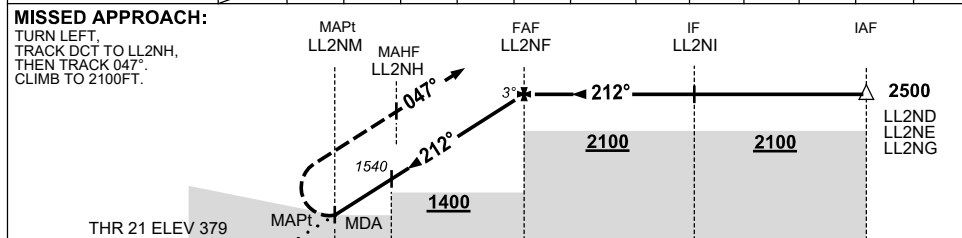


TR	IN	TURN	TIME	MIN ALT	DME LMT
212°	Left	1		2500	



**AD ELEV 385**  
Bearings are Magnetic  
Elevations in FEET AMSL

NM TO NEXT WPT	LL2NM	0.1	1	2	3	4	LL2NF				
ALT (3° APCH PATH)		950	1220	1540	1860	2180	2500				



NM TO LL2NM: 1.5, 0, 2, 5, 10, 15

**NOTES**

CATEGORY	A	B	C	D
LNAV	950 (565-3.2)			NOT APPLICABLE
CIRCLING *	990 (605-2.4)		1090 (705-4.0)	
ALTERNATE	(1105-4.4)		(1205-6.0)	

- MAX IAS:  
INITIAL : 210KT.  
MISSED APCH : 200KT.  
TURN
- NO CIRCLING WEST OF RWY 03/21.

Changes: LNAV MINIMA, WAYPOINT NAMES, SEGMENT MINIMA, 694FT OBST, Editorial.

LLEGN02-179