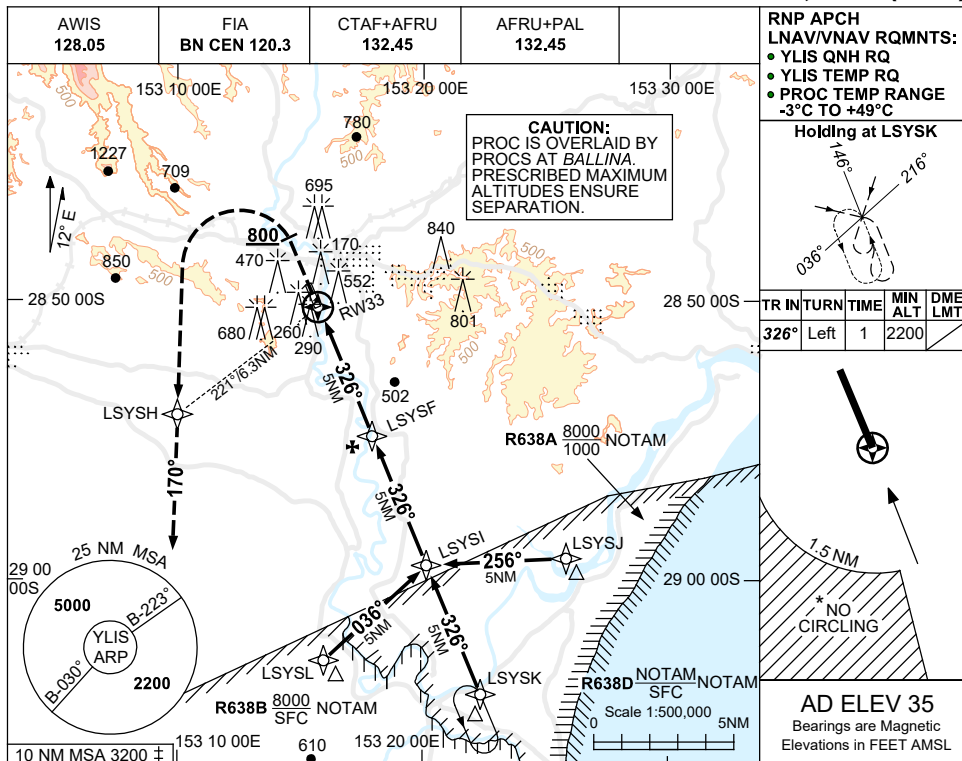


USE QNH

RNP RWY 33

LISMORE, NSW (YLIS)

7 SEP 2023



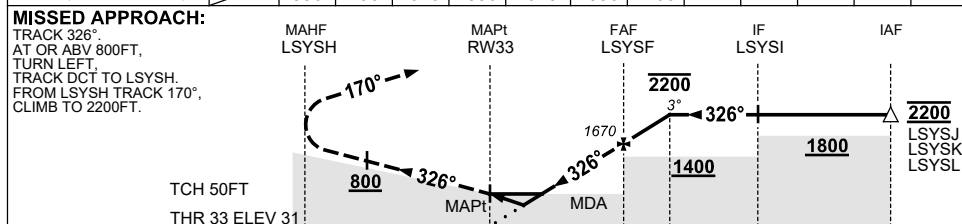
**RNP APCH**  
**LNAV/VNAV RQMNTS:**  
 • YLIS QNH RQ  
 • YLIS TEMP RQ  
 • PROC TEMP RANGE -3°C TO +49°C

**Holding at LSYSK**

TR IN	TURN	TIME	MIN ALT	DME LMT
326°	Left	1	2200	

**AD ELEV 35**  
 Bearings are Magnetic  
 Elevations in FEET AMSL

NM TO NEXT WPT	RW33	1.6	2.2	3	4	LSYSF	1	1.7			
ALT (3° APCH PATH)		590	790	1040	1350	1670	1990	2200			



NM TO RW33

**NOTES**

- MAX IAS:  
 INITIAL : 210KT.  
 MAP TURN: 190KT.
- NO CIRCLING WEST OF RWY 15/33 BEYOND 1.5NM.
- 10 NM MSA IS A COMBINED AREA FOR YLIS, YBNA.
- PROCEDURE NOT AVBL WHEN R638 ACTIVE.
- COLOR: SEE SPEC NOTICES.

CATEGORY	A	B	C	D
LNAV/VNAV		590 (559-3.2)		NOT APPLICABLE
LNAV		790 (755-4.3)		
CIRCLING*	1060 (1025-2.4)		1310 (1275-4.0)	
ALTERNATE	(1525-4.4)		(1775-6.0)	

Changes: MODEL ACFT SYMBOL REMOVED.

LISGN02-176