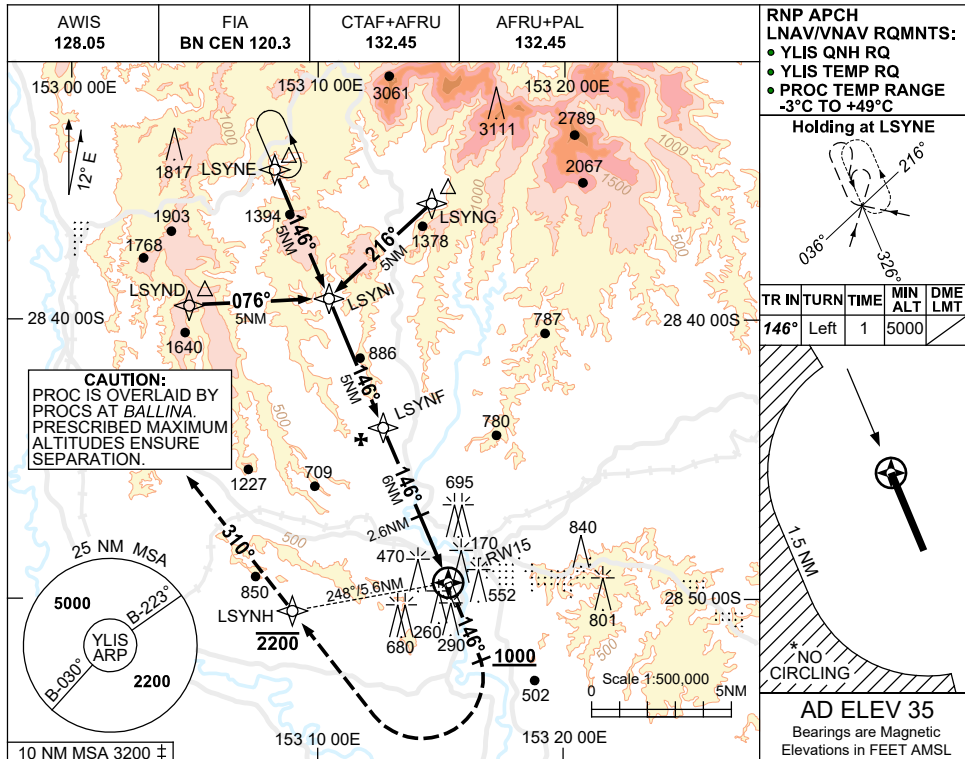


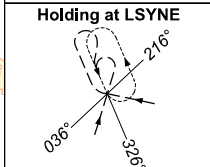
USE QNH

RNP RWY 15
LISMORE, NSW (YLIS)

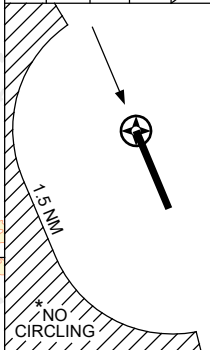
7 SEP 2023



RNP APCH
LNAV/VNAV RQMNTS:
• YLIS QNH RQ
• YLIS TEMP RQ
• PROC TEMP RANGE
-3°C TO +49°C

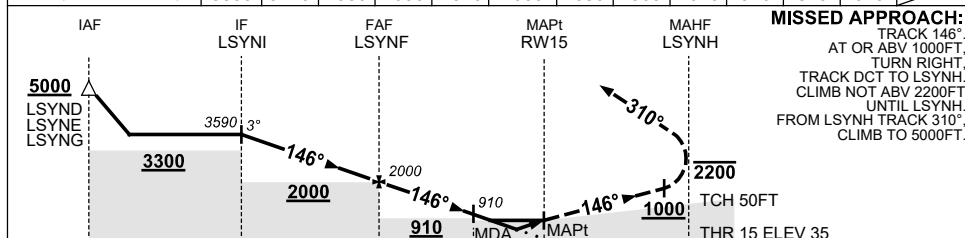


TR IN	TURN	TIME	MIN ALT	DME LMT
146°	Left	1	5000	



AD ELEV 35
Bearings are Magnetic
Elevations in FEET AMSL

NM TO NEXT WPT	LSYNI	4	3	2	1	LSYNF	5	4	3	2.6	2.3	1.7	RW15
ALT (3° APCH PATH)	3590	3270	2950	2630	2310	2000	1680	1360	1040	910	810	620	



- NOTES**
- MAX IAS:
INITIAL : 210KT.
MAP TURN: 190KT.
 - NO CIRCLING WEST OF RWY 15/33 BEYOND 1.5NM.
 - 10 NM MSA IS A COMBINED AREA FOR YLIS, YBNA.
 - COLOUR: SEE SPEC NOTICES.

CATEGORY	A	B	C	D
LNAV/VNAV		620 (585-3.3)		NOT APPLICABLE
LNAV		810 (775-4.4)		
CIRCLING *	1060 (1025-2.4)		1310 (1275-4.0)	
ALTERNATE	(1525-4.4)		(1775-6.0)	

Changes: MODEL ACFT SYMBOL REMOVED.

LISGN01-176