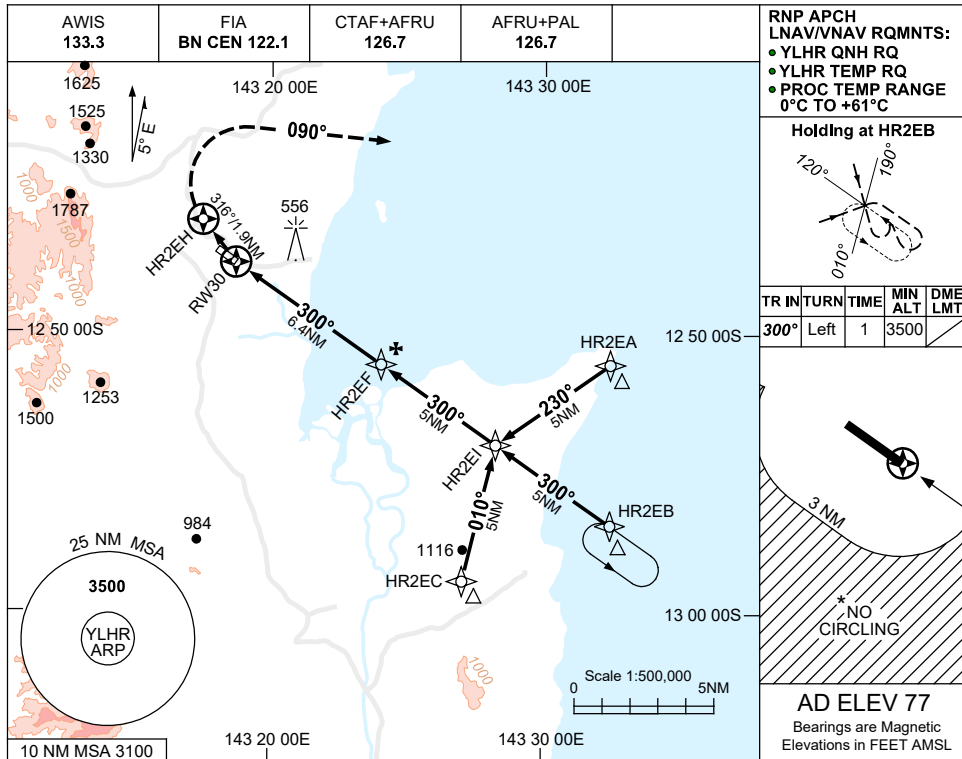
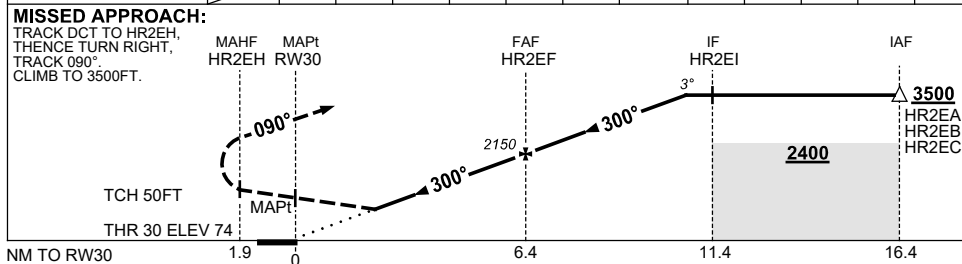


**USE QNH RNP Y RWY 30 (LNAV/VNAV ONLY)**  
**LOCKHART RIVER, QLD (YLHR)**

**30 NOV 2023**



NM TO NEXT WPT	RW30	1.7	2	3	4	5	6	HR2EF	1	2	3	4.3	
ALT (3° APCH PATH)		670	770	1080	1400	1720	2030	2150	2460	2780	3100	3500	



**NOTES**

CATEGORY	A	B	C	D
LNAV/VNAV(4% MAP)	670 (596-3.4)			NOT APPLICABLE
LNAV/VNAV(2.5% MAP)	770 (696-4.0)			
CIRCLING *	1160 (1083-2.4)		1390 (1313-4.0)	
ALTERNATE	(1583-4.4)		(1813-6.0)	

1. MAX IAS:  
 INITIAL : 210KT.  
 MAP TURN: 200KT.
- \*2. NO CIRCLING BEYOND 3NM STH OF RWY 12/30.
3. COLOUR: SEE SPEC NOTICES.

Changes: DA, THR ELEV, WPT NAMING CONVENTION, NEW LOGO, Editorial.

LHRGN03-177