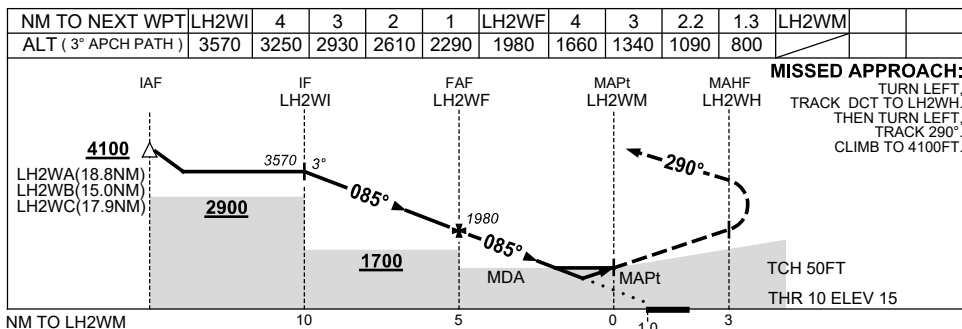
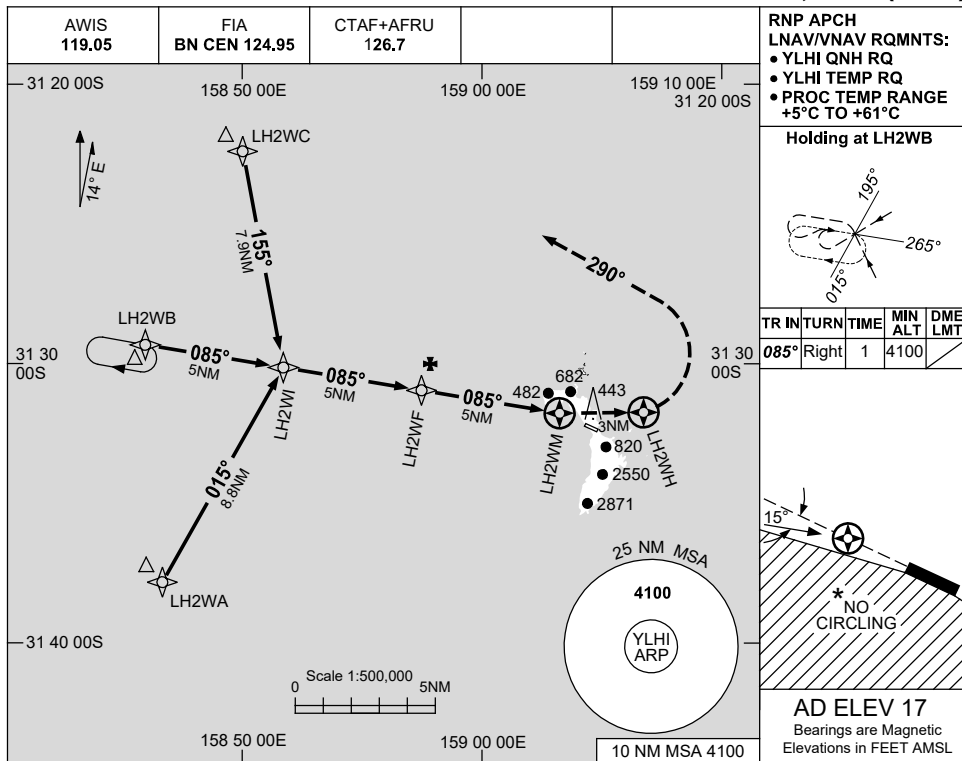


USE QNH

RNP RWY 10

16 JUN 2022

LORD HOWE ISLAND, NSW (YLHI)



CATEGORY	A	B	C	D	
LNAV/VNAV	800 (785-4.5)			NOT APPLICABLE	
LNAV	1090 (1073-5.0)				
CIRCLING *	1340 (1323-2.4)		1440 (1423-4.0)		
ALTERNATE	(1823-4.4)		(1923-6.0)		

- NOTES**
- MAX IAS: INITIAL : 210KT.
  - \* 2. NO CIRCLING STH OF RWY 10/28.

Changes: MINIMA, WPT NAMING CONVENTION, Editorial.

LHIGN01-171