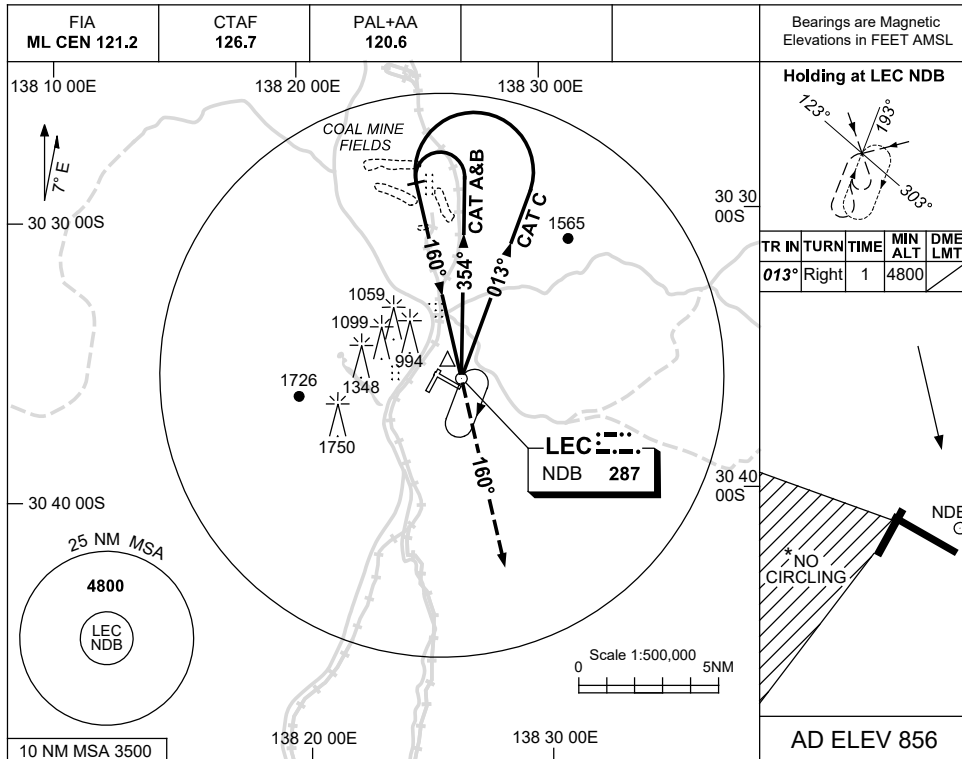


USE QNH

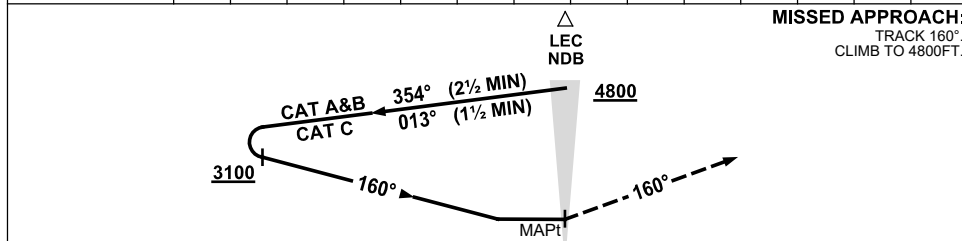
NDB-A

16 JUN 2022

LEIGH CREEK, SA (YLEC)



DME DIST	NOT APPLICABLE							
ALT								



NOTES

CATEGORY	A	B	C	D
				NOT APPLICABLE
CIRCLING*	1760 (904-2.4)		1930 (1074-4.0)	
ALTERNATE	(1404-4.4)		(1574-6.0)	

1. MAX IAS:
INITIAL :
CAT C 210KT.
- * 2. NO CIRCLING IN
SECTOR SW OF RWYS
02/20 AND 11/29.
3. AWIS (PHONE)
08 8150 3807

Changes: PAL+AA.

LECNB01-171