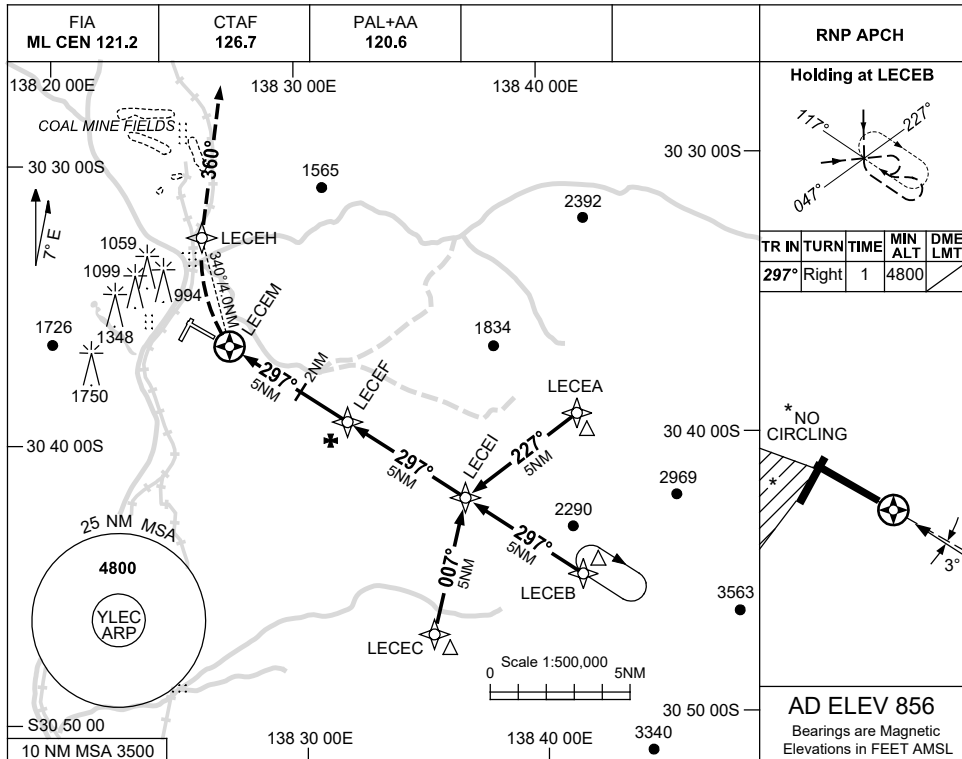


USE QNH

RNP RWY 29

LEIGH CREEK, SA (YLEC)

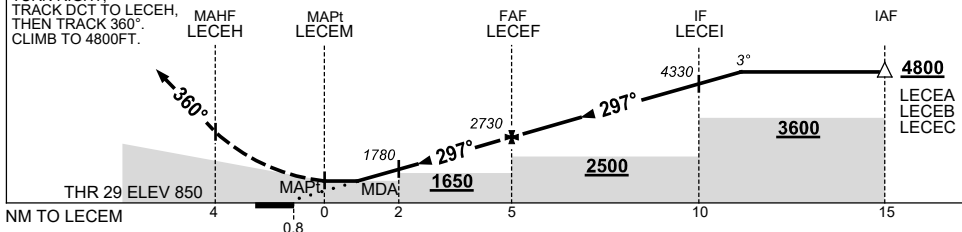
1 DEC 2022



NM TO NEXT WPT	LECEM	1.3	2	3	4	LECEF	1	2	3	4	LECEI	1	1.5
ALT (3° APCH PATH)	1560	1780	2100	2410	2730	3050	3370	3690	4010	4330	4640	4800	

MISSED APPROACH:

TURN RIGHT
TRACK DCT TO LECEH,
THEN TRACK 360°. CLIMB TO 4800FT.



NOTES

CATEGORY	A	B	C	D
LNAV	1560 (704-4.0)			NOT APPLICABLE
CIRCLING *	1760 (904-2.4)		1930 (1074-4.0)	
ALTERNATE	(1404-4.4)		(1574-6.0)	

- MAX IAS: INITIAL : 210KT.
- *NO CIRCLING IN SECTOR SW OF RWYS 02/20 AND 11/29.
- AWIS (PHONE) 08 8150 3807

Changes: CHART TITLE, PBN SPECIFICATION BOX.

LECGN02-173