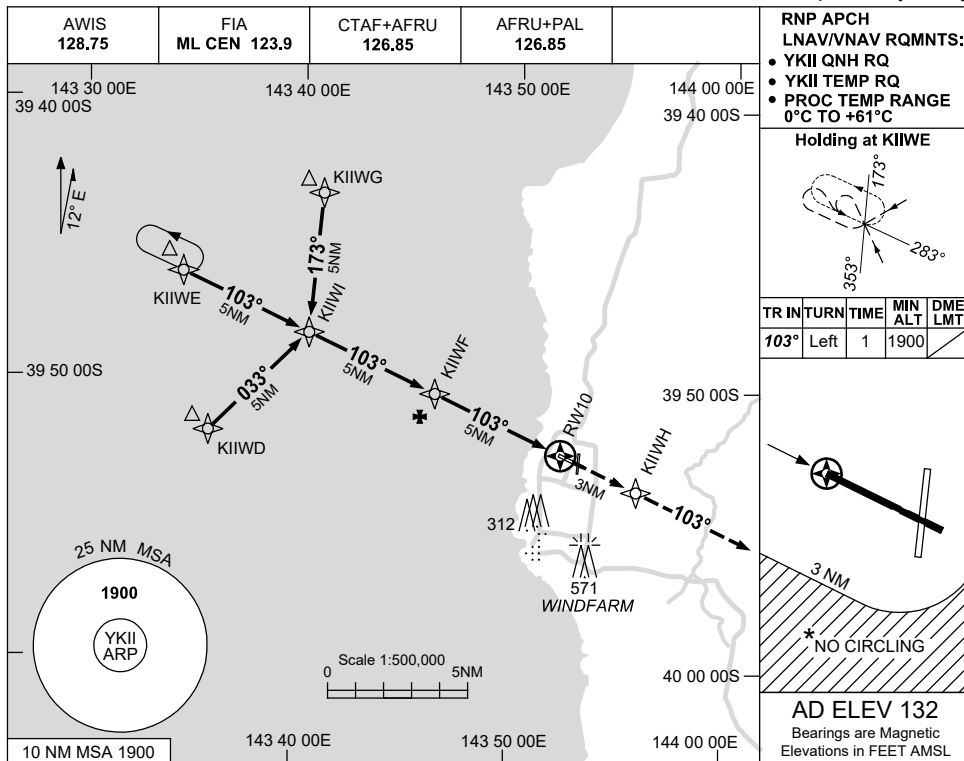


USE QNH

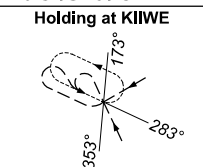
RNP RWY 10

KING ISLAND, TAS (YKII)

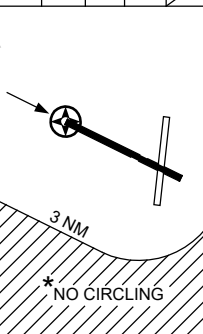
15 JUN 2023



RNP APCH  
LNAV/VNAV RQMTS:  
• YKII QNH RQ  
• YKII TEMP RQ  
• PROC TEMP RANGE  
0°C TO +61°C

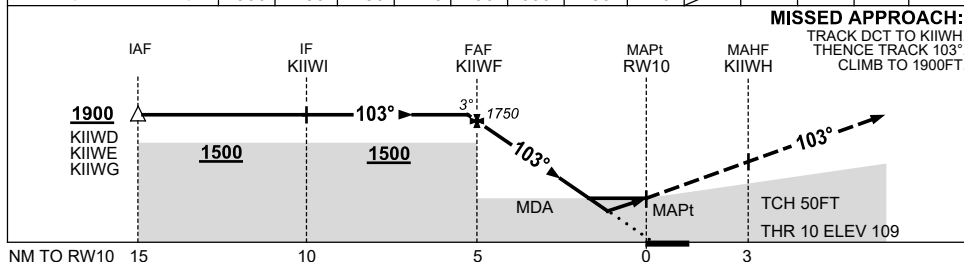


TR IN	TURN	TIME	MIN ALT	DME LMT
103°	Left	1	1900	



AD ELEV 132  
Bearings are Magnetic  
Elevations in FEET AMSL

NM TO NEXT WPT	0.5	KIIWF	4	3	2	1.6	1	0.9	RW10				
ALT (3° APCH PATH)	1900	1750	1430	1110	790	660	480	440					



NOTES

CATEGORY	A	B	C	D
LNAV/VNAV	440 (331-1.8)			NOT APPLICABLE
LNAV	660 (551-3.1)			
CIRCLING *	840 (708-2.4)		940 (808-4.0)	
ALTERNATE	(1208-4.4)		(1308-6.0)	

- MAX IAS: INITIAL : 210KT.
- \* 2. NO CIRCLING BEYOND 3NM SOUTH OF RWY 10/28.

Changes: CHART TITLE, PBN SPECIFICATION BOX, Editorial.

KIIGN02-175