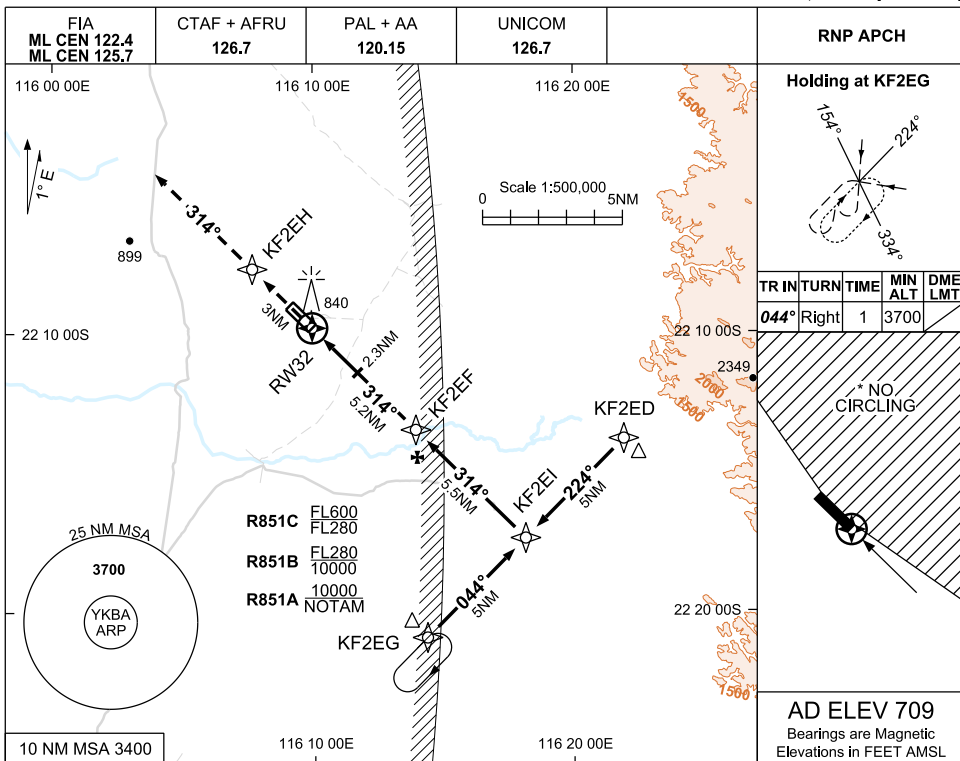


USE QNH

RNP RWY 32

KENS BORE, WA (YKBA)

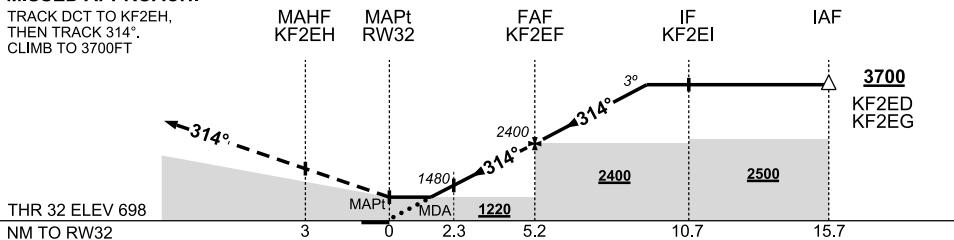
21 MAR 2024



| NM TO NEXT WPT | RW32 | 1.5 | 2 | 2.3 | 3 | 4 | KF2EF | 1 | 2 | 3 | 4 | | |
|--------------------|------|------|------|------|------|------|-------|------|------|------|------|--|--|
| ALT (3° APCH PATH) | | 1220 | 1390 | 1480 | 1710 | 2030 | 2400 | 2720 | 3040 | 3360 | 3700 | | |

MISSED APPROACH:

TRACK DCT TO KF2EH, THEN TRACK 314°. CLIMB TO 3700FT



NOTES

- MAX IAS: INITIAL: 210KT HOLDING: 210KT
- * NO CIRCLING NE OF RWY 14/32.
- CAUTION: YEWA PROCS ADJACENT TO SE.
- PROC UNAVBL WHEN R851A LOWER LIMIT BLW 4500FT.

| CATEGORY | A | B | C | D |
|------------|----------------|---|----------------|----------------|
| LNAV | 1220 (522-3.0) | | | NOT AUTHORISED |
| * CIRCLING | 1330 (621-2.4) | | 1460 (751-4.0) | |
| ALTERNATE | (1125-4.4) | | (1255-6.0) | |

Changes: NEW PROCEDURE

KBAGN02-178