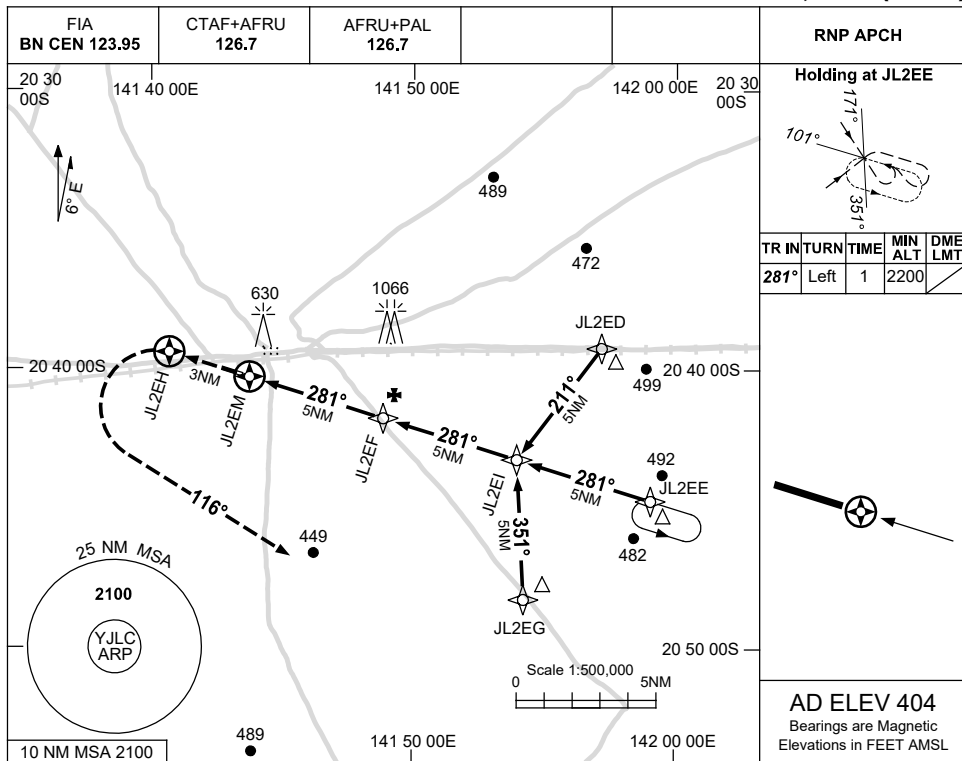


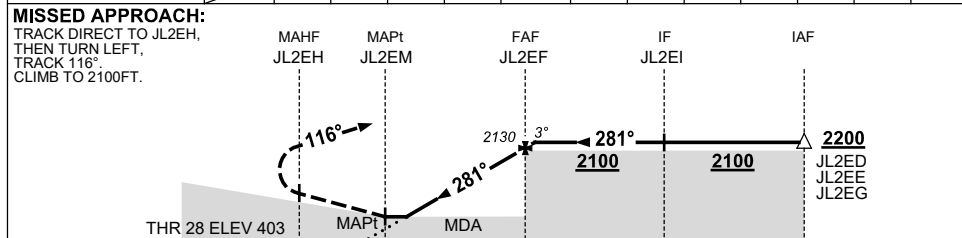
USE QNH

RNP RWY 28  
**JULIA CREEK, QLD (YJLC)**

15 JUN 2023



NM TO NEXT WPT	JL2EM	1.5	2	3	4	JL2EF	0.2						
ALT (3° APCH PATH)		1010	1180	1490	1810	2130	2200						



NM TO JL2EM 3 0.3 5 10 15

**NOTES**

CATEGORY	A	B	C	D
LNAV	1010 (606-3.4)			NOT APPLICABLE
CIRCLING	1040 (636-2.4)	1140 (736-4.0)		
ALTERNATE	(1136-4.4)		(1236-6.0)	

- MAX IAS: INITIAL : 210KT.
- AWIS PHONE 07 3564 3796

Changes: AWIS PH.

JLCGN02-175