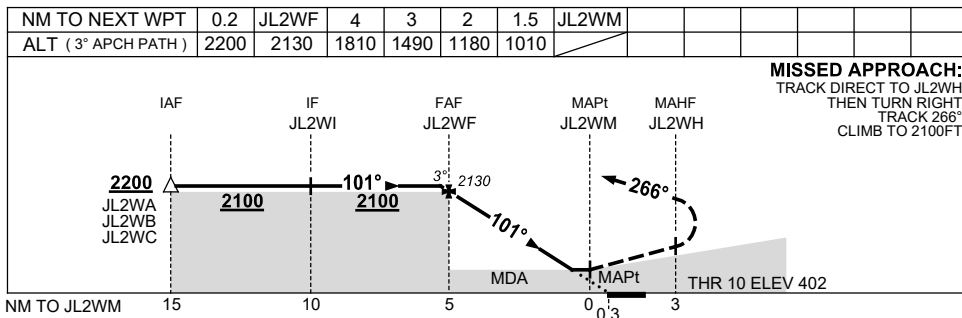
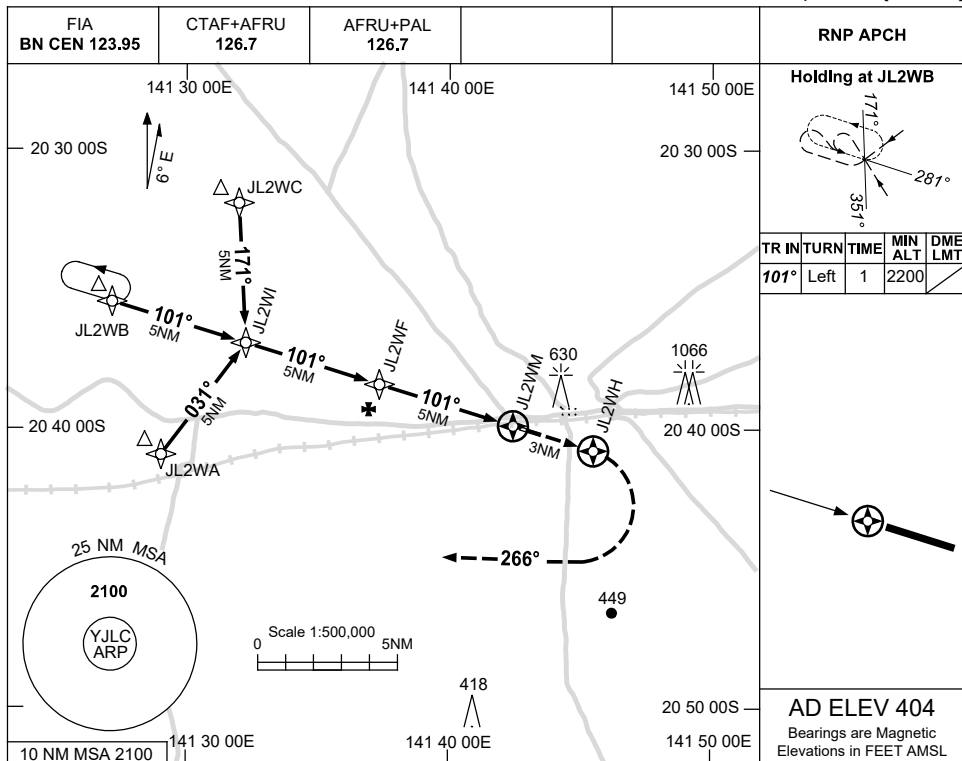


USE QNH

RNP RWY 10  
**JULIA CREEK, QLD (YJLC)**

15 JUN 2023



**NOTES**

CATEGORY	A	B	C	D
LNAV	<b>1010 (606-3.4)</b>			<b>NOT APPLICABLE</b>
CIRCLING	<b>1040 (636-2.4)</b>		<b>1140 (736-4.0)</b>	
ALTERNATE	(1136-4.4)		(1236-6.0)	

1. MAX IAS:  
INITIAL : 210KT.
2. AWIS PHONE  
07 3564 3796

Changes: AWIS PH.

JLCGN01-175