

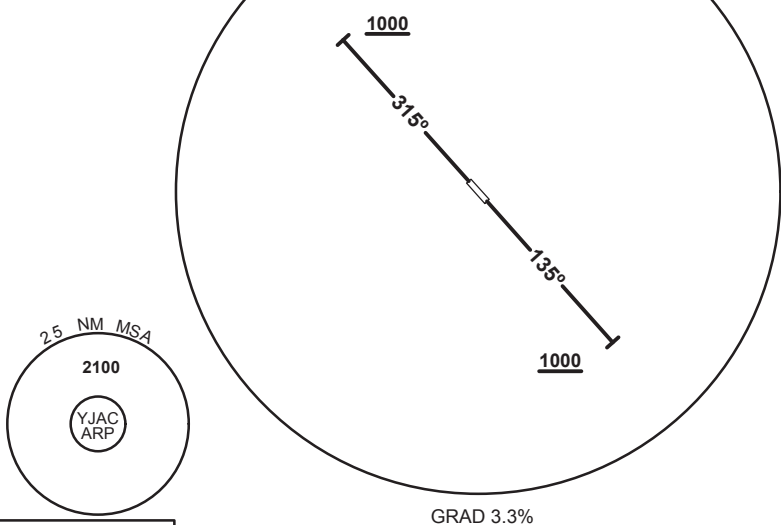
27 FEB 2020

STANDARD INSTRUMENT DEPARTURE
 JACINTH AMBROSIA ONE DEPARTURE
JACINTH AMBROSIA, SA (YJAC)

FIA (A030) ML CEN 132.7	FIA (A050) ML CEN 123.5	CTAF 126.7		BRG are MAG ELEV in FT AMSL
----------------------------	----------------------------	---------------	--	--------------------------------



SPEED
 MAX IAS 250KT
 BELOW 10,000FT



10 NM MSA 2000

JACINTH AMBROSIA ONE DEPARTURE

RWY 14

- Track 135°
- AT or ABV 1000FT turn as required
- Continue climb to 2100FT
- Intercept flight plan route

RWY 32

- Track 315°
- AT or ABV 1000FT turn as required
- Continue climb to 2100FT
- Intercept flight plan route

NOTES

- NIL -

Changes: FROM SUP H127/19

JACDP01-162