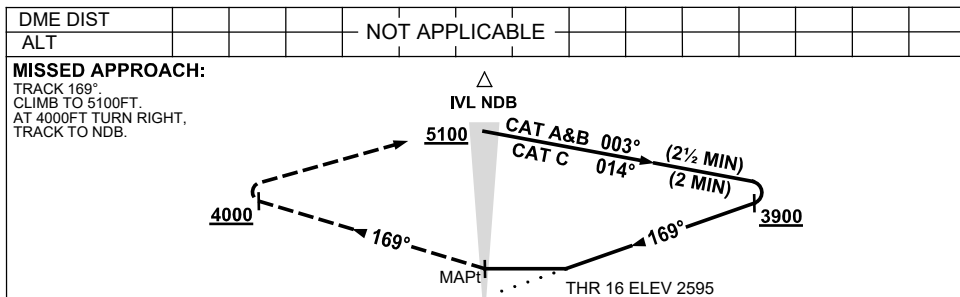
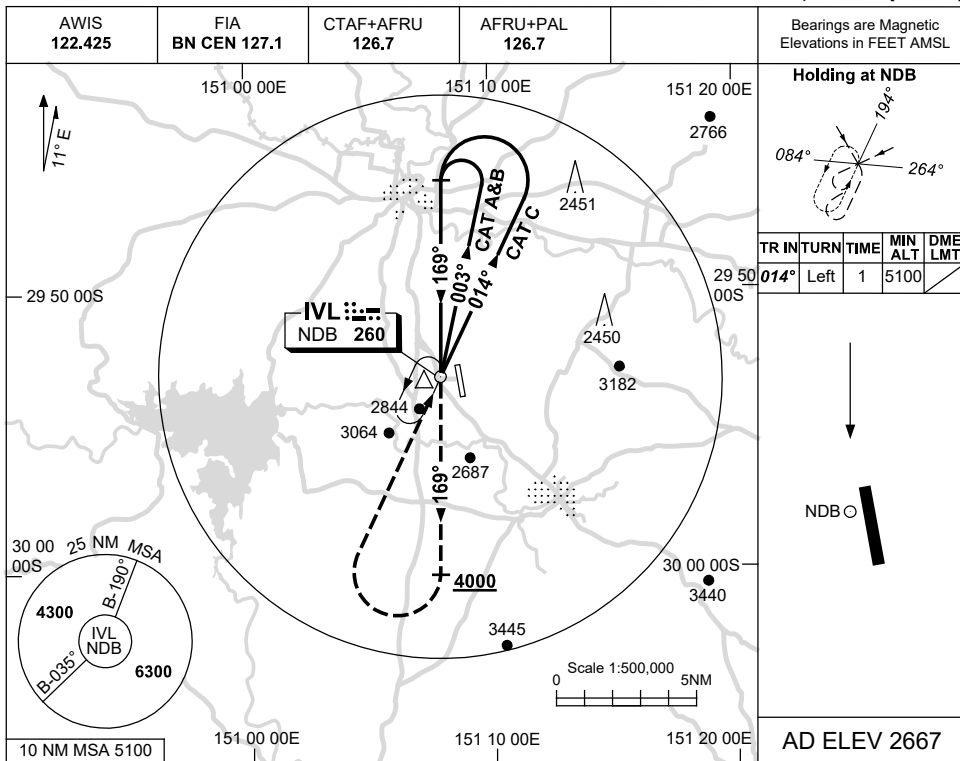


USE QNH

NDB RWY 16
INVERELL, NSW (YIVL)

16 JUN 2022



NOTES

CATEGORY	A	B	C	D
S-I NDB	3220 (625-3.6)			NOT APPLICABLE
CIRCLING	3350 (683-2.4)	3720 (1053-4.0)		
ALTERNATE	(1183-4.4)	(1553-6.0)		

1. MAX IAS:
 HOLDING: 210KT.
 INITIAL : 210KT.

Changes: AWIS.

IVLNB01-171