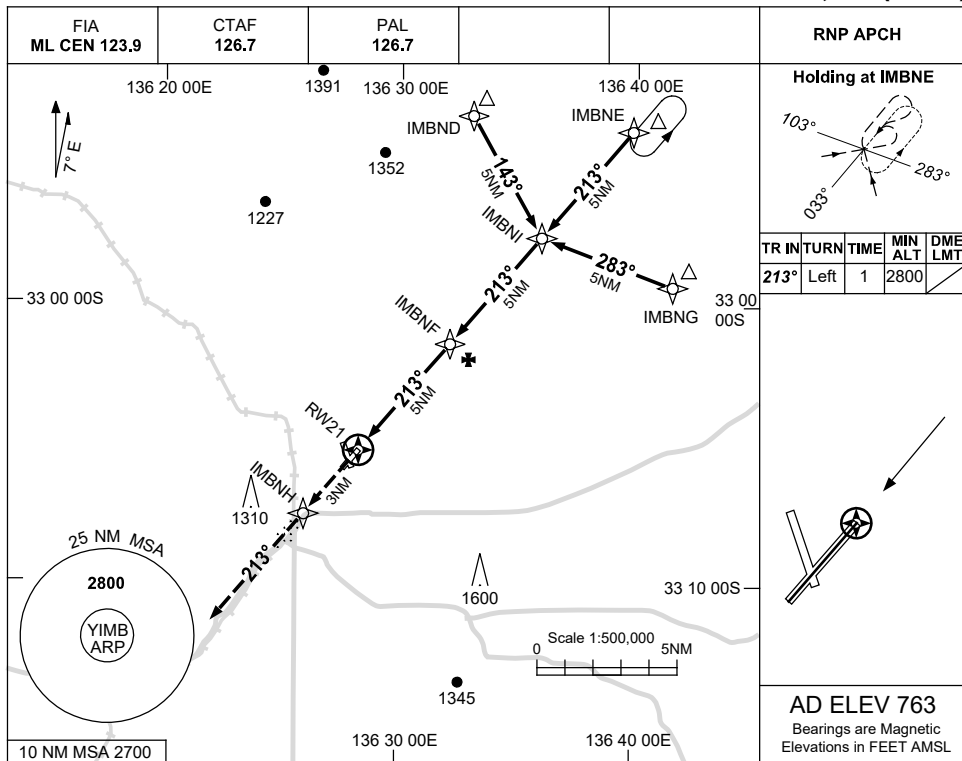


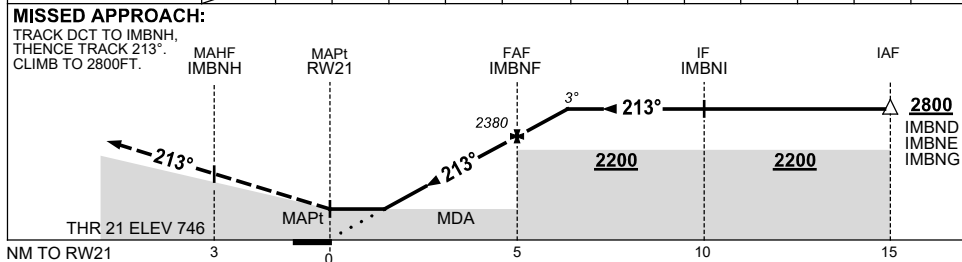
USE QNH

RNP RWY 21  
KIMBA, SA (YIMB)

23 MAR 2023



NM TO NEXT WPT	RW21	1.6	2	3	4	IMBNF	1	1.3				
ALT (3° APCH PATH)		1290	1430	1750	2070	2380	2700	2800				



**NOTES**

CATEGORY	A	B	C	D
LNAV	1290 (544-3.1)			NOT APPLICABLE
CIRCLING	1570 (807-2.4)	1930 (1167-4.0)		
ALTERNATE	(1307-4.4)		(1667-6.0)	

1. MAX IAS:  
INITIAL : 210KT.

Changes: PAL FREQ.

IMBGN02-174