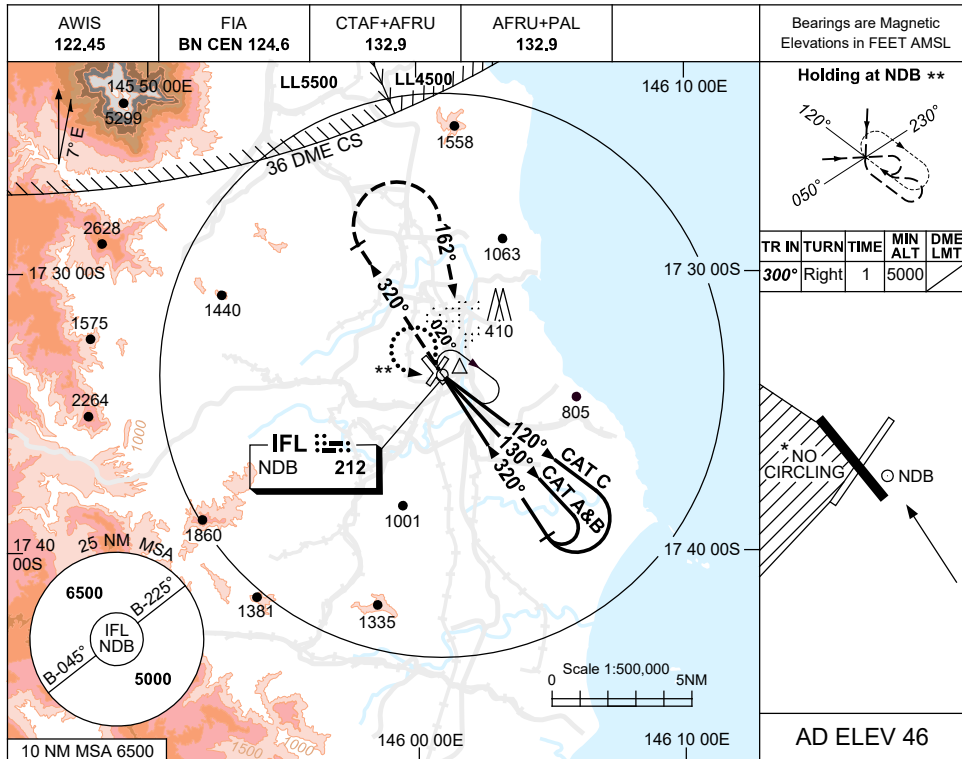


USE QNH

NDB-A

7 SEP 2023

INNISFAIL/MUNDOO, QLD (YIFL)



DME DIST	NOT APPLICABLE				
ALT					

MISSED APPROACH:
 TRACK 320°
 AT 1700FT TURN RIGHT,
 TRACK 162°.
 CLIMB TO 5000FT.

NOTES

1. MAX IAS:
INITIAL : 210KT.
- *2. NO CIRCLING IN SECTOR WEST OF RWY 14 & RWY 03.
3. MISS APCH MAY PENETRATE CS CTA.
4. PROC TURN(80°/260°)
** RQ TO JOIN PROC FROM HOLD
5. COLOUR: SEE SPEC NOTICES.

CATEGORY	A	B	C	D
				NOT APPLICABLE
CIRCLING *	930 (884-2.4)		1480 (1434-4.0)	
ALTERNATE	(1384-4.4)		(1934-6.0)	

Changes: MISSED APPROACH INSTRUCTIONS, Editorial.

IFLN01-176