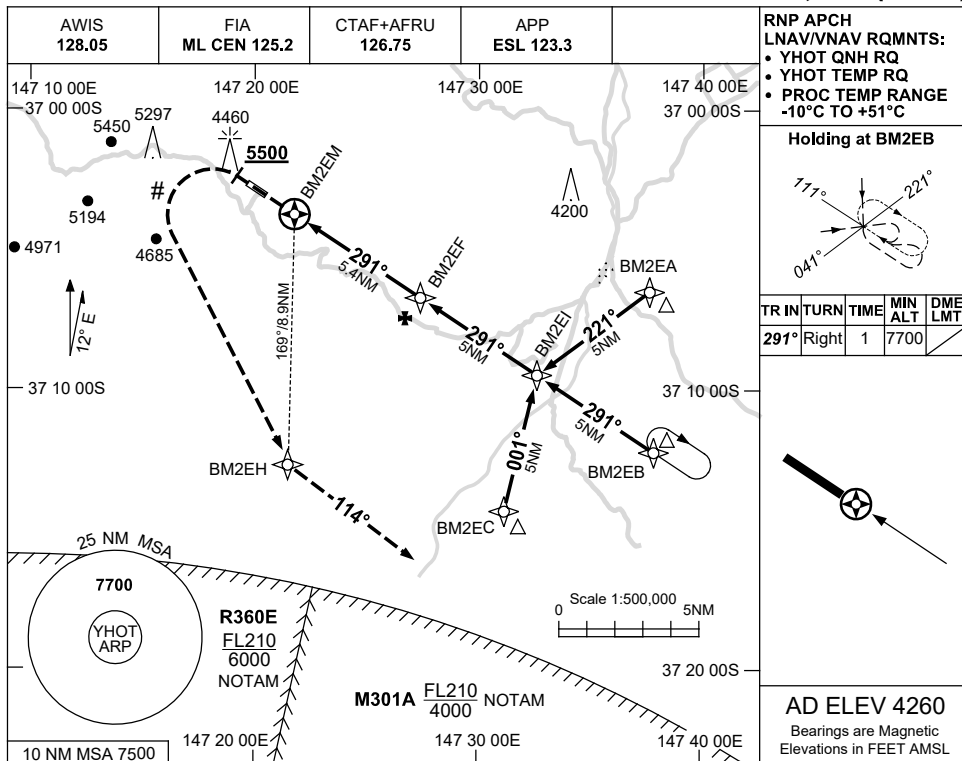


USE QNH

RNP RWY 29

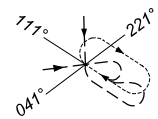
13 JUN 2024

MOUNT HOTHAM, VIC (YHOT)

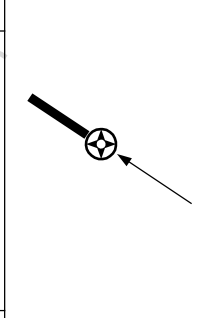


RNP APCH  
LNAV/VNAV RQMNTS:  
• YHOT QNH RQ  
• YHOT TEMP RQ  
• PROC TEMP RANGE  
-10°C TO +51°C

Holding at BM2EB



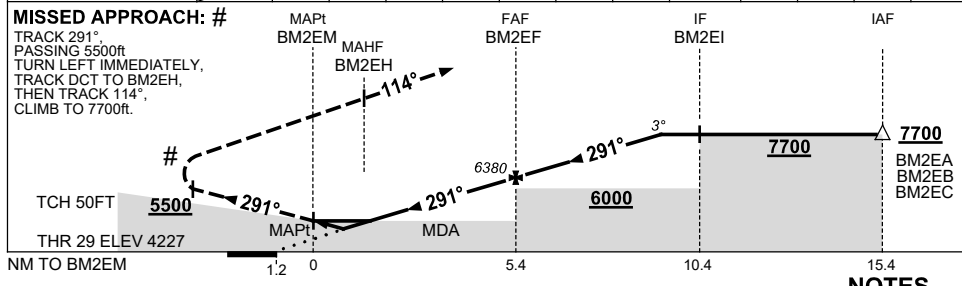
TR IN	TURN	TIME	MIN ALT	DME LMT
291°	Right	1	7700	



AD ELEV 4260

Bearings are Magnetic  
Elevations in FEET AMSL

NM TO NEXT WPT	BM2EM	0.1	0.4	0.7	1	2	3	4	BM2EF	1	2	3	4.1
ALT (3° APCH PATH)		4700	4800	4890	4990	5300	5620	5940	6380	6700	7020	7330	7700



CATEGORY	NOTES		
	A	B	C
LNAV/VNAV (2.5% MAP)	4890 (663-3.8)		
LNAV/VNAV # (3.3% MAP)	4700 (473-2.7)		
LNAV (2.5% MAP)	4990 (763-4.4)		
LNAV # (3.3% MAP)	4800 (573-3.3)		
CIRCLING	5450 (1190-2.4)	5880 (1620-4.0)	
ALTERNATE	(1690-4.4)		(2120-6.0)

1. MAX IAS:  
INITIAL : 210KT.  
MAP TURN : 210KT.  
#2. MIN MAP GRAD 3.3%  
TO 5500FT, THEN 2.5%.  
3. HOLDING NOT AVBL  
WHEN M301A ACTIVE.

Changes: MISSED APCH INSTRUCTIONS, WPT NAMING CONVENTION, Editorial. HOTGN01-179