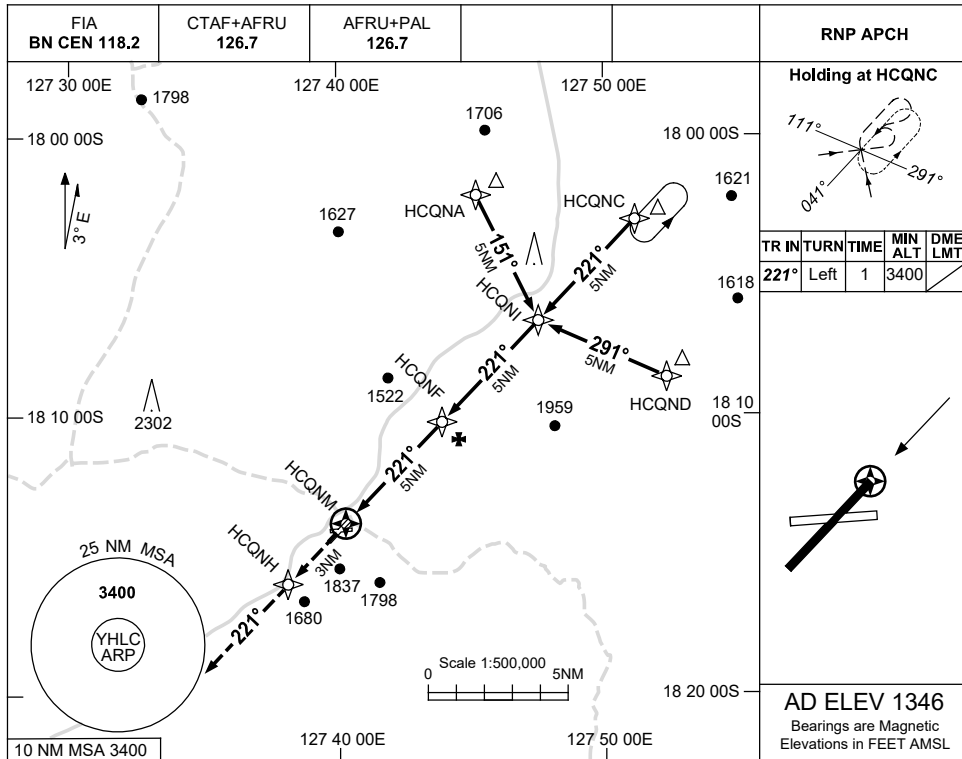


USE QNH

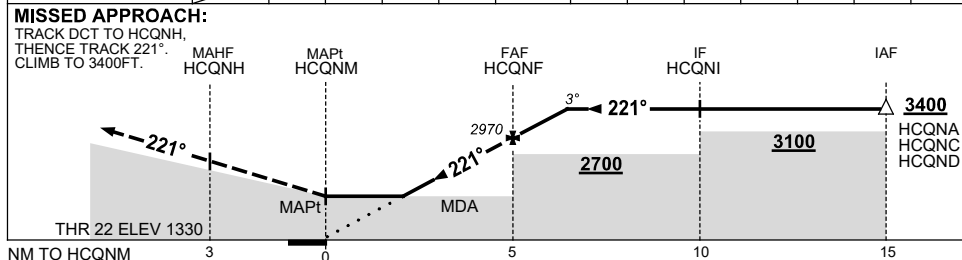
RNP RWY 22

HALLS CREEK, WA (YHLC)

23 MAR 2023



NM TO NEXT WPT	HCQNM	1.9	2	3	4	HCQNF	1	1.3				
ALT (3° APCH PATH)	1980	2020	2340	2650	2970	3290	3400					



NOTES

- MAX IAS: INITIAL : 210KT.
- AWIS (PHONE) 08 6216 2617

CATEGORY	A	B	C	D
LNAV	1980 (650-3.7)			NOT APPLICABLE
CIRCLING	2350 (1004-2.4)	2450 (1054-4.0)		
ALTERNATE	(1504-4.4)		(1604-6.0)	

Changes: MISSED APPROACH WAYPOINT.

HLCGN02-174