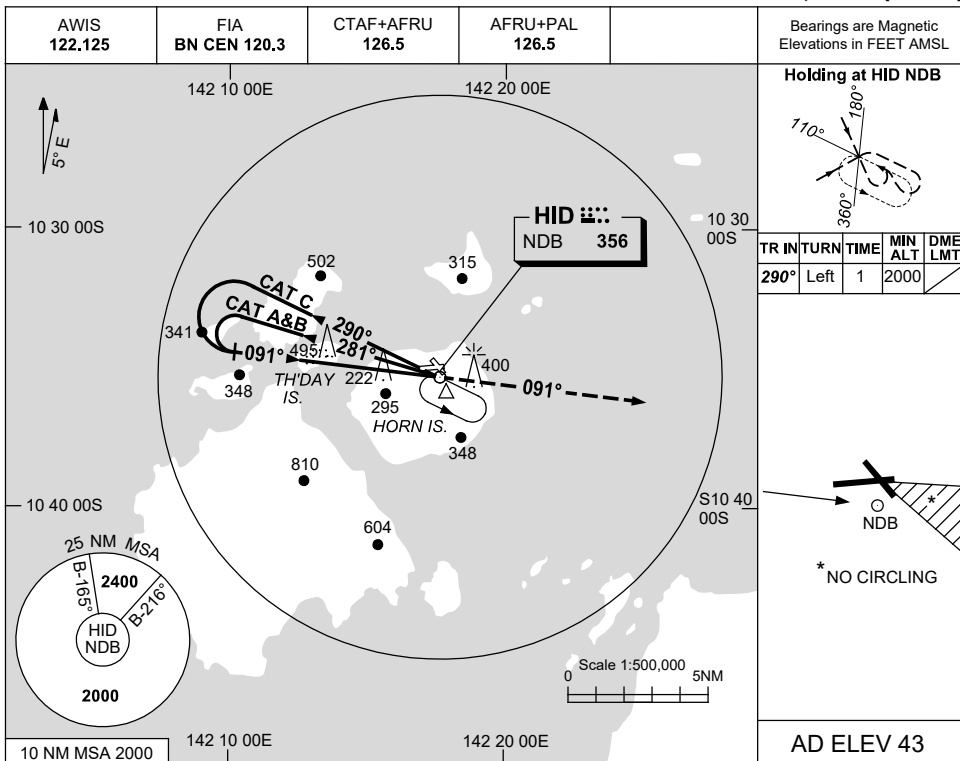


USE QNH

NDB RWY 08

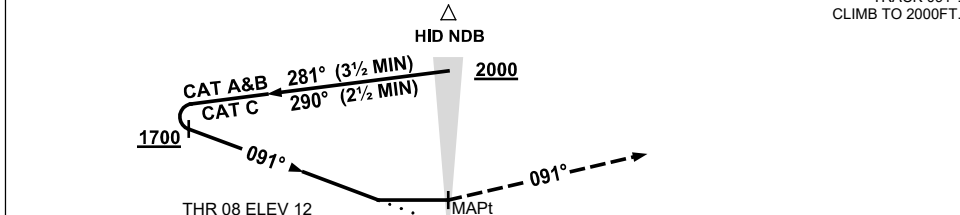
HORN ISLAND, QLD (YHID)

7 NOV 2019



DME DIST		NOT APPLICABLE																		
ALT																				

MISSED APPROACH:
TRACK 091°.
CLIMB TO 2000FT.



NOTES

1. MAX IAS:
INITIAL :
CAT A&B 140KT.
CAT C 210KT.
- *2. NO CIRCLING IN SECTOR SOUTH OF RWY 26 AND EAST OF RWY 32.
3. LANDING NOT PERMITTED RWY 32.

CATEGORY	A	B	C	D
S-I NDB	930 (918-5.0)			NOT APPLICABLE
CIRCLING *	970 (927-2.4)		1030 (987-4.0)	
ALTERNATE	(1427-4.4)		(1487-6.0)	

Changes: CAT C CIRCLING MINIMA, ALTERNATE CAT C MINIMA.

HIDNB01-161