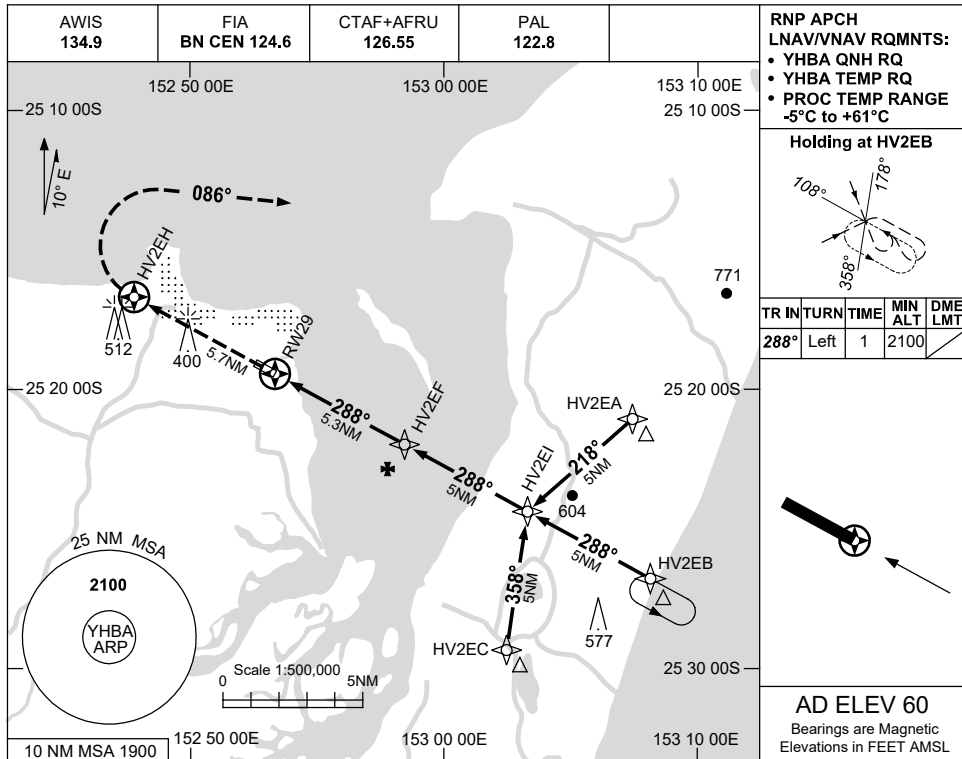


USE QNH

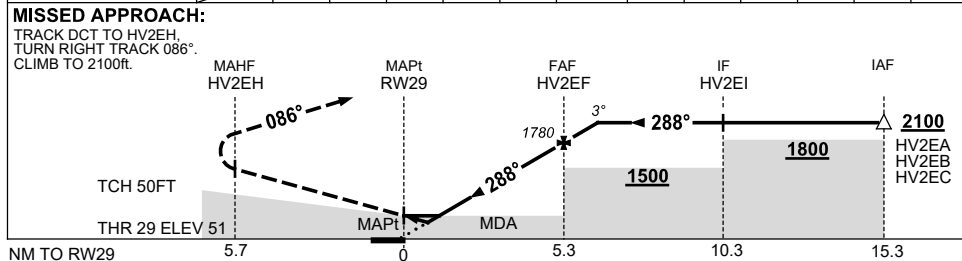
RNP RWY 29

28 NOV 2024

HERVEY BAY, QLD (YHBA)



NM TO NEXT WPT	RW29	0.8	1.3	2	3	4	HV2EF	1				
ALT (3° APCH PATH)		340	530	740	1060	1370	1780	2100				



**NOTES**

1. MAX IAS:  
INITIAL : 210KT.

CATEGORY	A	B	C	D
LNAV/VNAV	340 (289-1.6)			NOT APPLICABLE
LNAV	530 (479-2.7)			
CIRCLING	800 (740-2.4)		900 (840-4.0)	
ALTERNATE	(1240-4.4)		(1340-6.0)	

Changes: DELETED NOTE 2, WPT NAMING CONVENTION.

HBAGN02-181