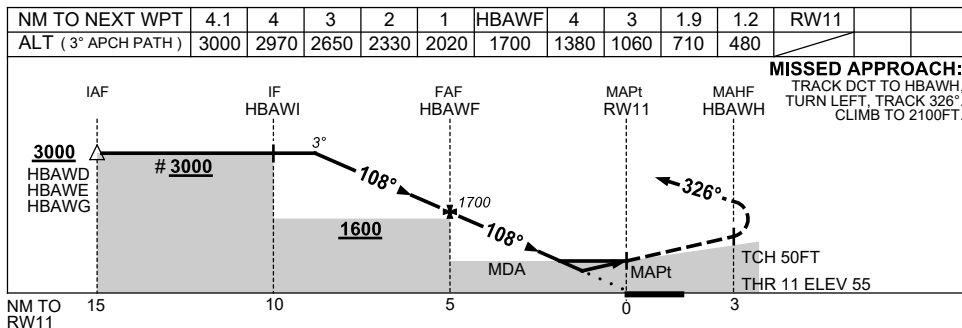
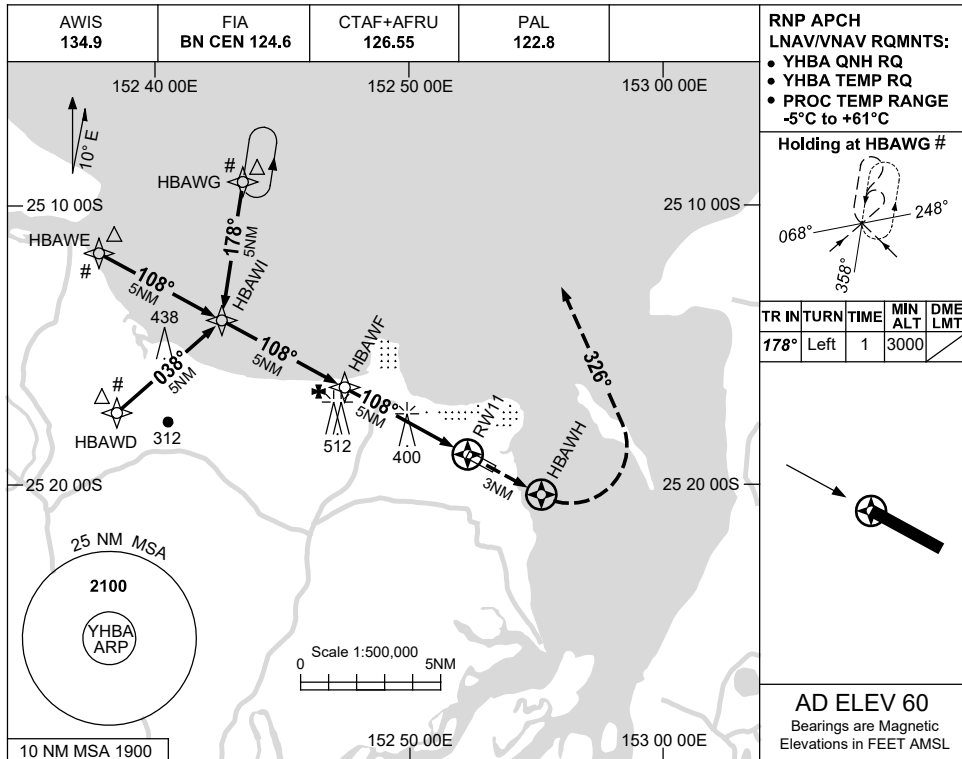


USE QNH

RNP RWY 11

24 MAR 2022

HERVEY BAY, QLD (YHBA)



NOTES

| CATEGORY | A | B | C | D |
|-----------|---------------|---------------|------------|----------------|
| LNAV/VNAV | | 480 (425-2.4) | | NOT APPLICABLE |
| LNAV | | 710 (650-3.7) | | |
| CIRCLING | 800 (740-2.4) | 900 (840-4.0) | | |
| ALTERNATE | (1240-4.4) | | (1340-6.0) | |

1. MAX IAS: INITIAL : 210KT.
- # 2. THIS APCH OVERLAYS YMYB RNP RWY 17.

Changes: CHART TITLE, PBN SPECIFICATION BOX, Editorial.

HBAGN01-170