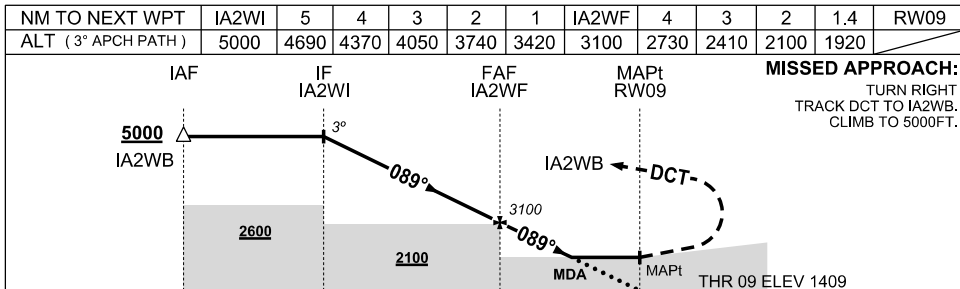
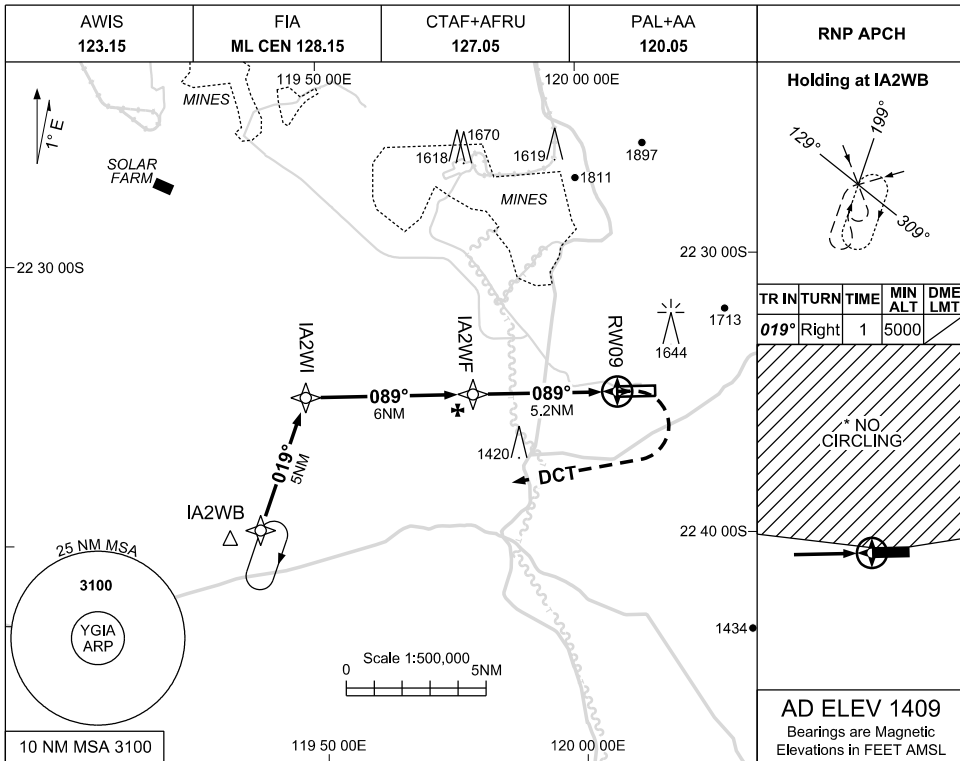


30 NOV 2023

USE QNH

RNP RWY 09
GINBATA, WA (YGIA)



NOTES

- MAX IAS:
INITIAL: 210KT
MAP TURN: 210KT
HOLDING: 185KT
- *NO CIRCLING
NORTH OF
RWY 09/27.
- CAUTION:** UA OPS
VVI 13NM RAD OF
YGIA ARP

CATEGORY	A	B	C	D
LNAV	1920 (511-2.9)			
* CIRCLING	2010 (601-2.4)		2240(831-4.0)	2340(931-5.0)
ALTERNATE	(1101-4.4)		(1331-6.0)	(1431-7.0)

Changes: CHART TITLE, EDITORIAL

GIAGN01-177