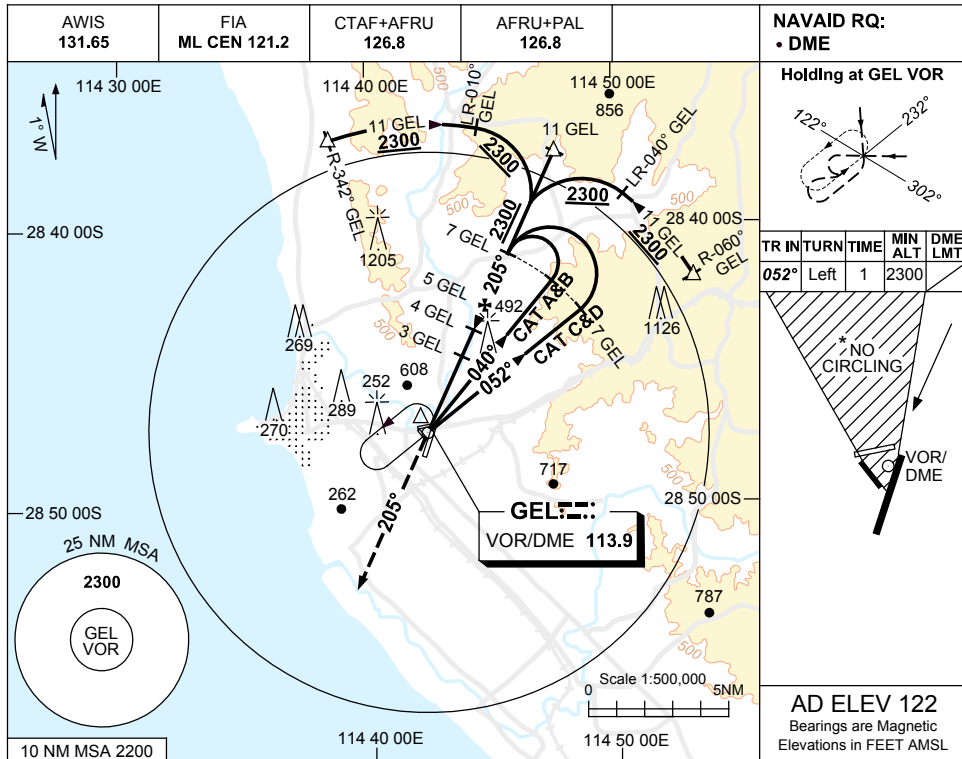


USE QNH

VOR RWY 21
GERALDTON, WA (YGEL)

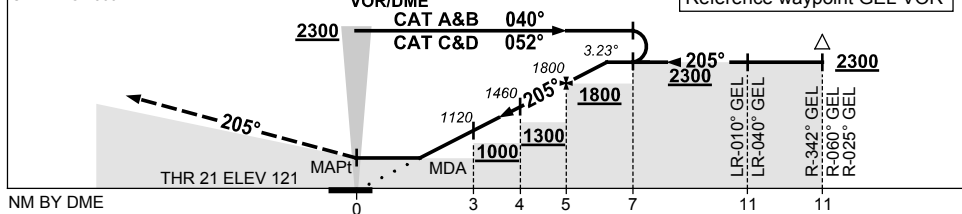
13 JUN 2024



DIST BY DME	2.2	3	4	5	6	6.5					
ALT (3.23° APCH PATH)	830	1120	1460	1800	2150	2300					

MISSED APPROACH:
TRACK 205°.
CLIMB TO 2300FT.

GNSS permitted in lieu of DME
Reference waypoint GEL VOR



NOTES

1. MAX IAS: INITIAL : 210KT.
- *2. NO CIRCLING IN SECTOR NORTH OF RWY 14 & RWY 21.
3. APCH PATH ANGLE DOES NOT COINCIDE WITH PAPI ON GLIDE SLOPE INDICATION.
4. COLOUR: SEE SPEC NOTICES.

CATEGORY	A	B	C	D
S-I VOR/DME	830 (708-3.8)			
CIRCLING *	1190 (1068-2.4)	1290 (1168-4.0)	1420 (1298-5.0)	
ALTERNATE	(1568-4.4)	(1668-6.0)	(1798-7.0)	

Changes: AD ELEV, MINIMA.

GELV001-179