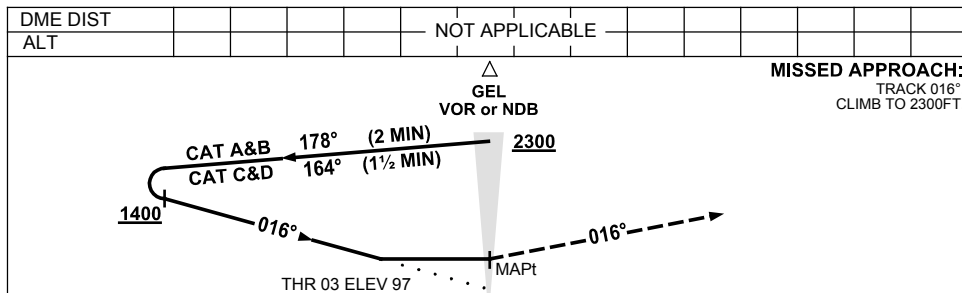
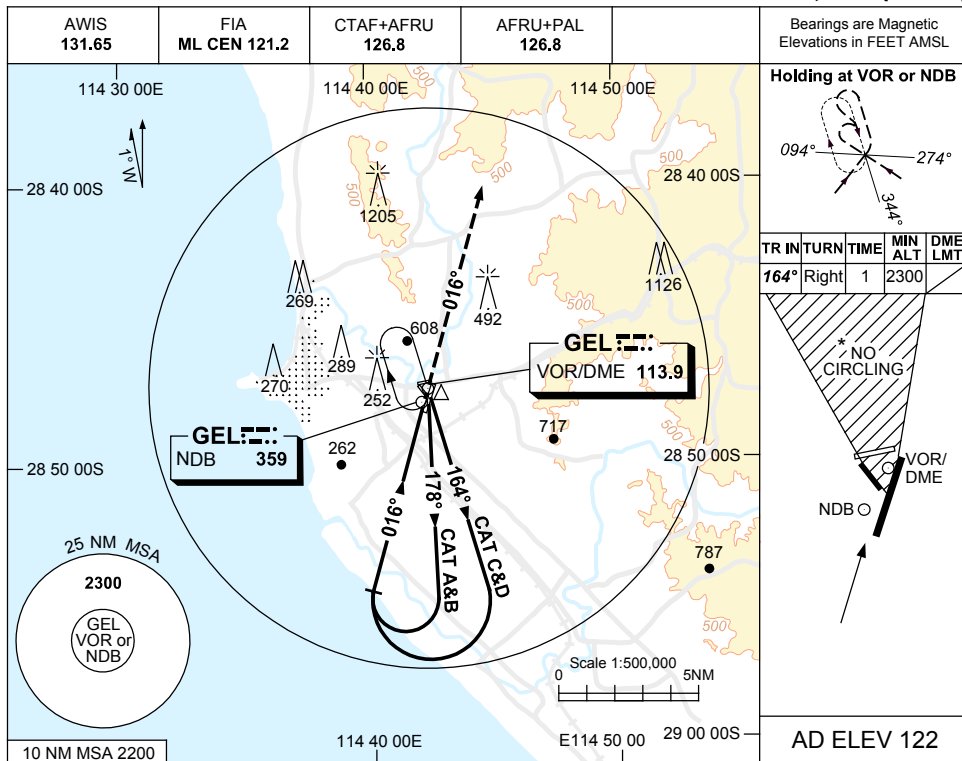


USE QNH

NDB-Y or VOR-Y RWY 03  
**GERALDTON, WA (YGEL)**

13 JUN 2024



**NOTES**

CATEGORY	A	B	C	D
S-I VORorNDB	<b>800 (703-4.0)</b>			
CIRCLING *	<b>1190 (1068-2.4)</b>	<b>1290 (1168-4.0)</b>	<b>1420 (1298-5.0)</b>	
ALTERNATE	(1568-4.4)	(1668-6.0)	(1798-7.0)	

1. MAX IAS:  
INITIAL : 210KT.
- \* 2. NO CIRCLING IN  
SECTOR NORTH OF  
RWY 14 & RWY 21.
3. COLOUR: SEE  
SPEC NOTICES.

Changes: AD ELEV, MINIMA.

GELNB02-179