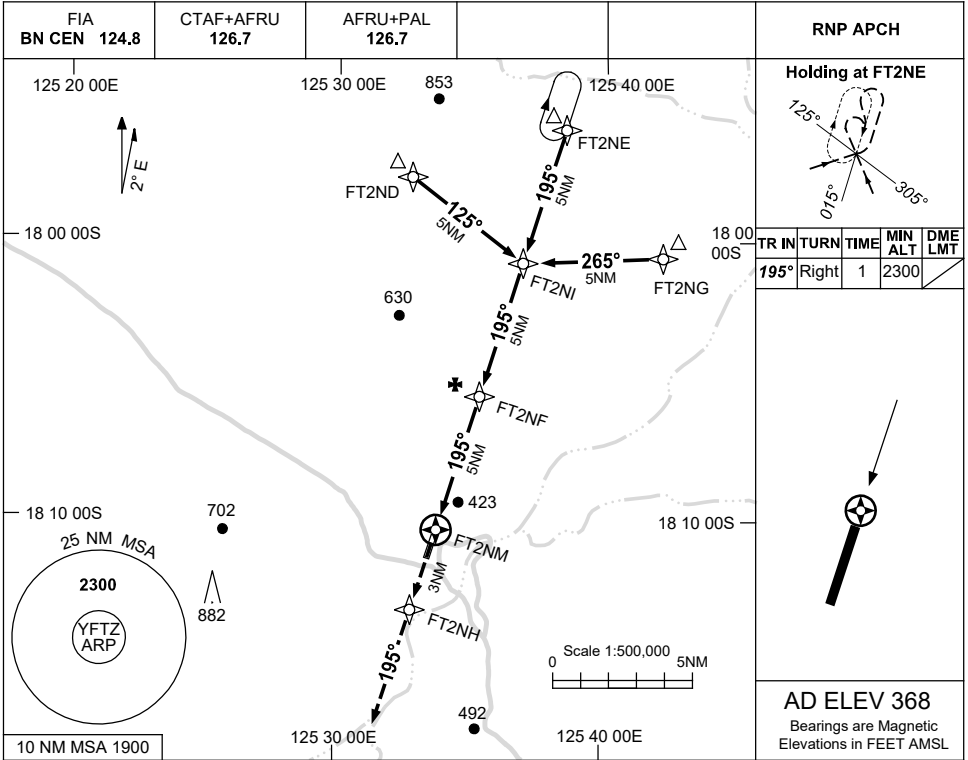


USE QNH

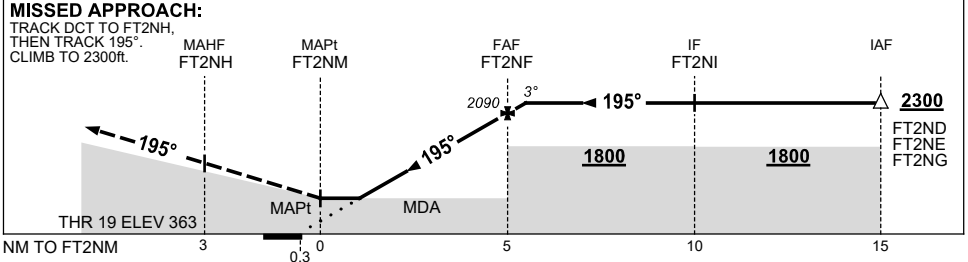
RNP RWY 19

20 MAR 2025

FITZROY CROSSING, WA (YFTZ)



NM TO NEXT WPT	FT2NM	1.4	2	3	4	FT2NF	0.7					
ALT (3° APCH PATH)		930	1140	1450	1770	2090	2300					



NOTES

CATEGORY	A	B	C	D
LNAV	930 (562-3.2)			NOT APPLICABLE
CIRCLING	1040 (672-2.4)		1140 (772-4.0)	
ALTERNATE	(1172-4.4)		(1272-6.0)	

1. MAX IAS:
INITIAL : 210KT.
2. **CAUTION:** POSSIBILITY OF STOCK ON AERODROME.
3. AWIS (PHONE)
08 6216 2612

Changes: WPT NAMING CONVENTION.

FTZGN02-182