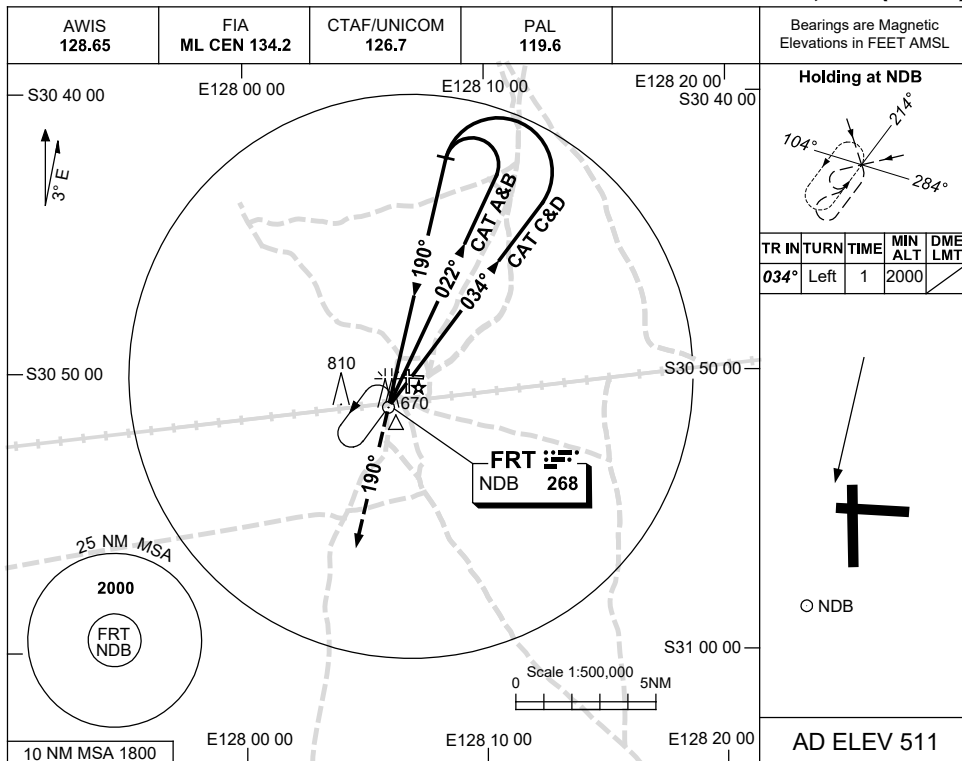


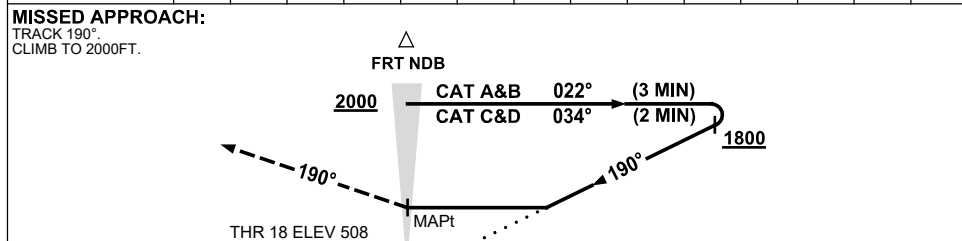
USE QNH

NDB RWY 18  
**FORREST, WA (YFRT)**

30 NOV 2023



DME DIST	NOT APPLICABLE									
ALT										



**NOTES**

CATEGORY	A	B	C	D
S-I NDB	<b>1180 (669-3.8)</b>			
CIRCLING	<b>1210 (699-2.4)</b>	<b>1310 (799-4.0)</b>	<b>1310 (799-5.0)</b>	
ALTERNATE	(1199-4.4)	(1299-6.0)	(1299-7.0)	

1. MAX IAS:  
 INITIAL :  
 CAT C&D : 210KT.

Changes: THR ELEV.

FRTNB01-177