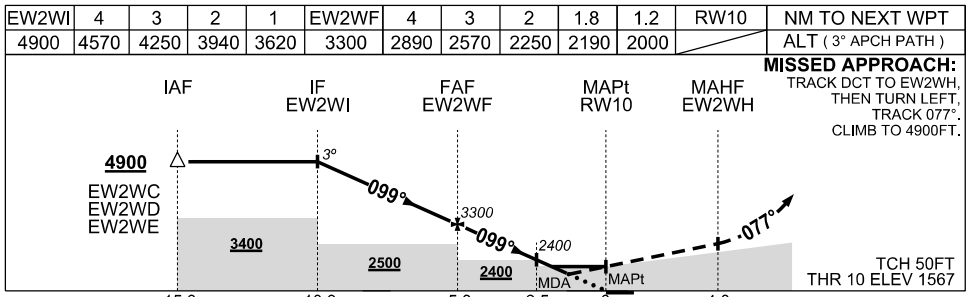
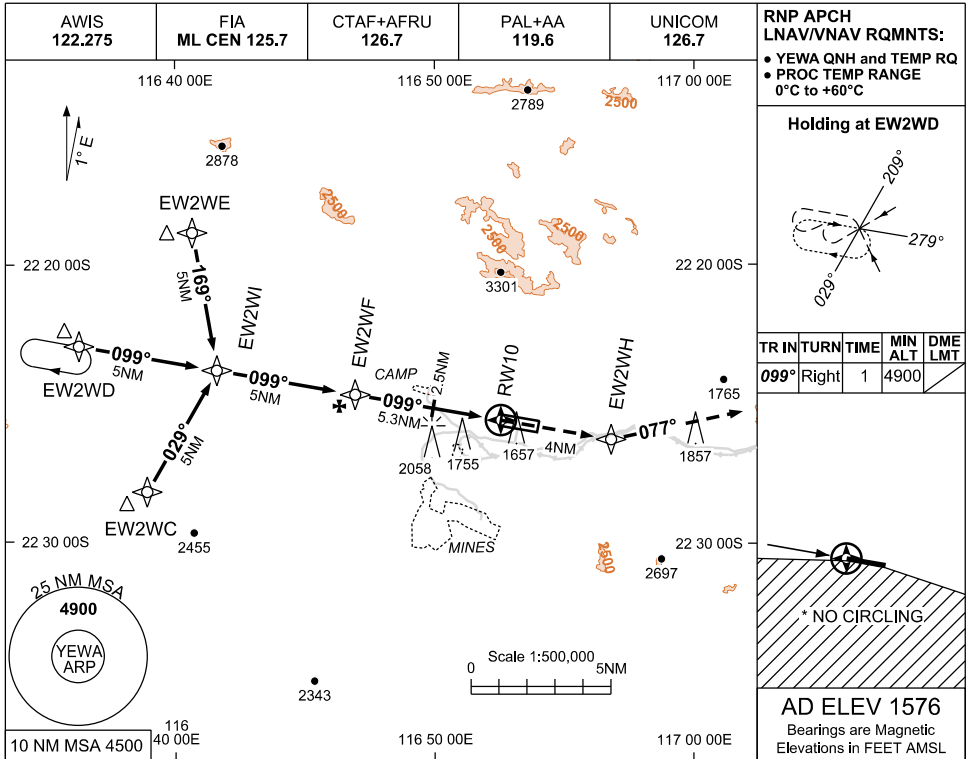


USE QNH

RNP RWY 10
ELIWANA, WA (YEWA)

30 NOV 2023



NOTES

1. MAX IAS : INITIAL: 210KT
- *2. NO CIRCLING S OF RWY 10/28
3. COLOUR: SEE SPEC NOTICES
4. CAUTION: YBGD PROCS ADJACENT TO S

CATEGORY	A	B	C	D
LNAV/VNAV	2000 (432-2.4)			
LNAV	2190 (622-3.5)			
*CIRCLING	2440 (864-2.4)	2680(1104-4.0)	NOT AUTHORISED	
ALTERNATE	(1364-4.4)	(1604-6.0)	NOT APPLICABLE	

Changes: CHART TITLE, WPT IDENT, EDITORIAL.

EWAGN01-177