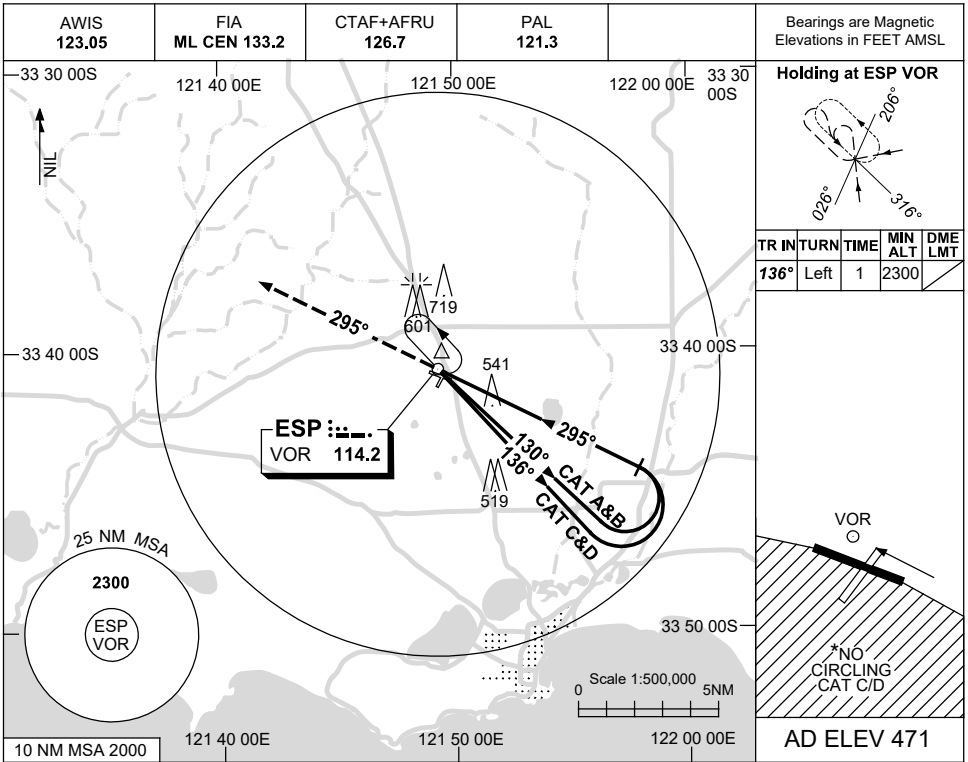


USE QNH

VOR RWY 29
ESPERANCE, WA (YESP)

21 MAR 2024



Holding at ESP VOR

TR IN	TURN	TIME	MIN ALT	DME LMT
136°	Left	1	2300	

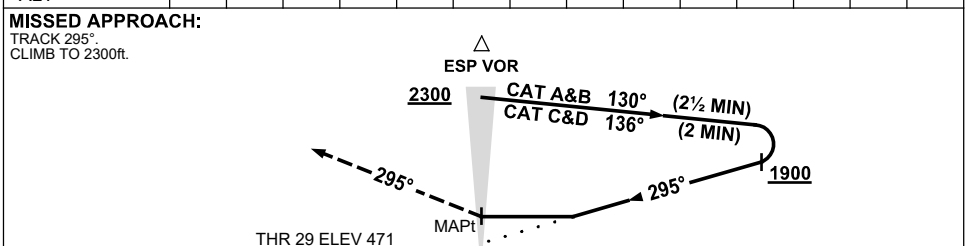
VOR

*NO CIRCLING
CAT C/D

AD ELEV 471

DME DIST														
ALT														

NOT APPLICABLE



NOTES

CATEGORY	A	B	C	D
S-I VOR	1040 (569-3.2)			
CIRCLING*	1120 (649-2.4)	1230 (759-4.0)	1260 (789-5.0)	
ALTERNATE	(1149-4.4)	(1259-6.0)	(1289-7.0)	

1. MAX IAS: INITIAL : 180KT.

* 2. NO CIRCLING CAT C/D STH OF RWY 11/29.

Changes: CAT C CIRCLING, MAG VAR, Editorial.

ESPV002-178