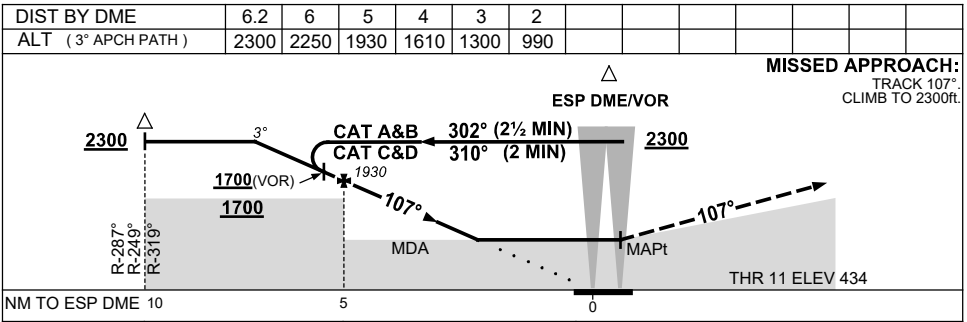
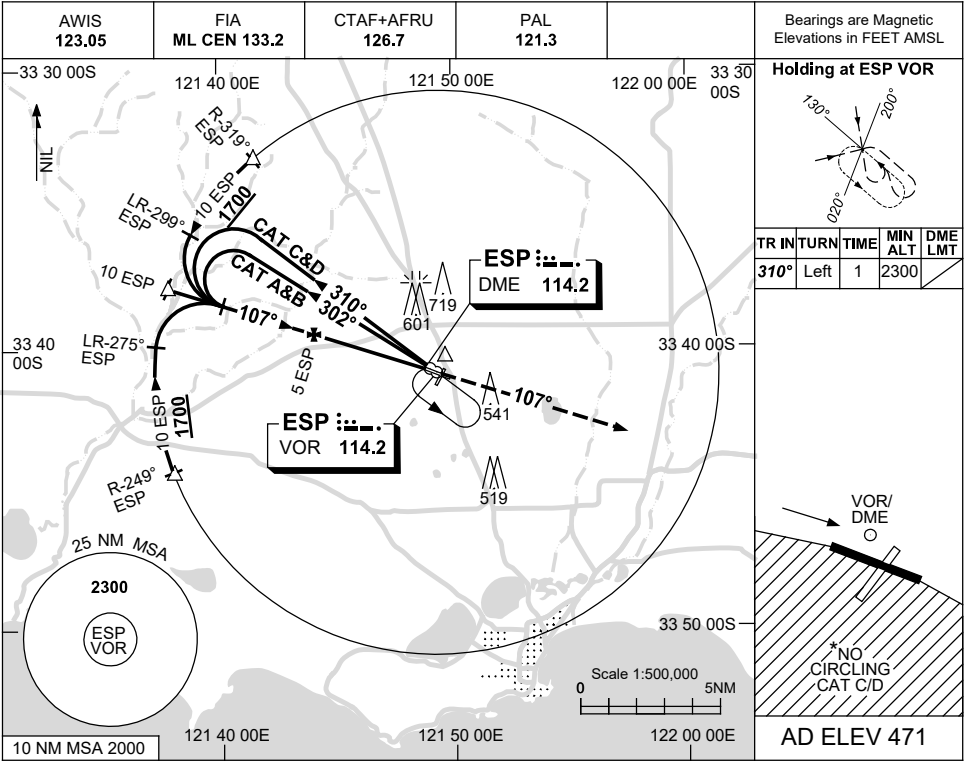


USE QNH

VOR RWY 11  
**ESPERANCE, WA (YESP)**

21 MAR 2024



CATEGORY	A	B	C	D
S-I VOR		1040 (606-3.4)		
S-I VOR/DME		990 (556-3.1)		
CIRCLING*	1120 (649-2.4)		1230 (759-4.0)	1260 (789-5.0)
ALTERNATE	(1149-4.4)		(1259-6.0)	(1289-7.0)

**NOTES**

1. MAX IAS:  
INITIAL : 210KT.
- \* 2. NO CIRCLING CAT C/D  
STH OF RWY 11/29.

Changes: CAT C CIRCLING, MAG VAR, Editorial.

ESPVO01-178