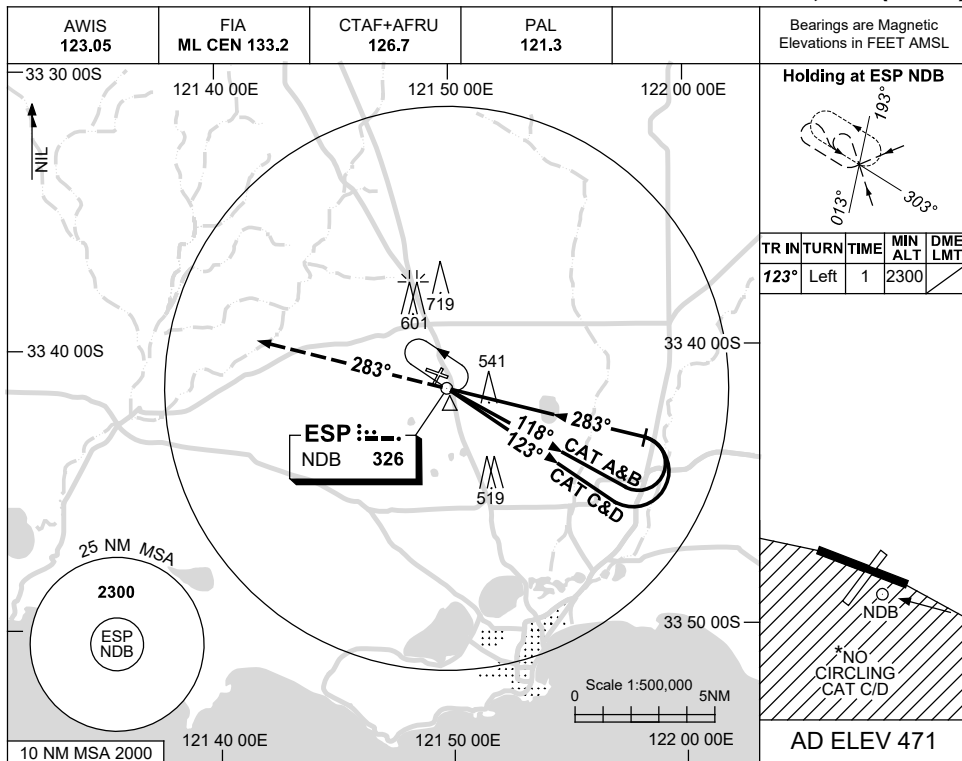


USE QNH

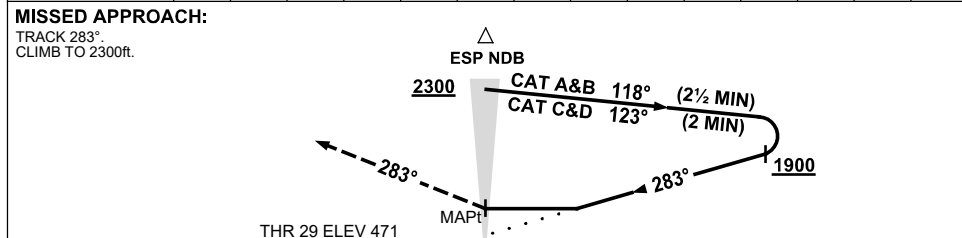
NDB RWY 29

21 MAR 2024

ESPERANCE, WA (YESP)



DME DIST	NOT APPLICABLE			
ALT				



**NOTES**

CATEGORY	A	B	C	D
S-I NDB	<b>1040 (569-3.2)</b>			
CIRCLING*	<b>1120 (649-2.4)</b>	<b>1230 (759-4.0)</b>	<b>1260 (789-5.0)</b>	
ALTERNATE	(1149-4.4)	(1259-6.0)	(1289-7.0)	

1. MAX IAS:  
INITIAL : 180KT.
- \* 2. NO CIRCLING CAT C/D  
STH OF RWY 11/29.

Changes: CAT C CIRCLING, MAG VAR, Editorial.

ESPNB02-178