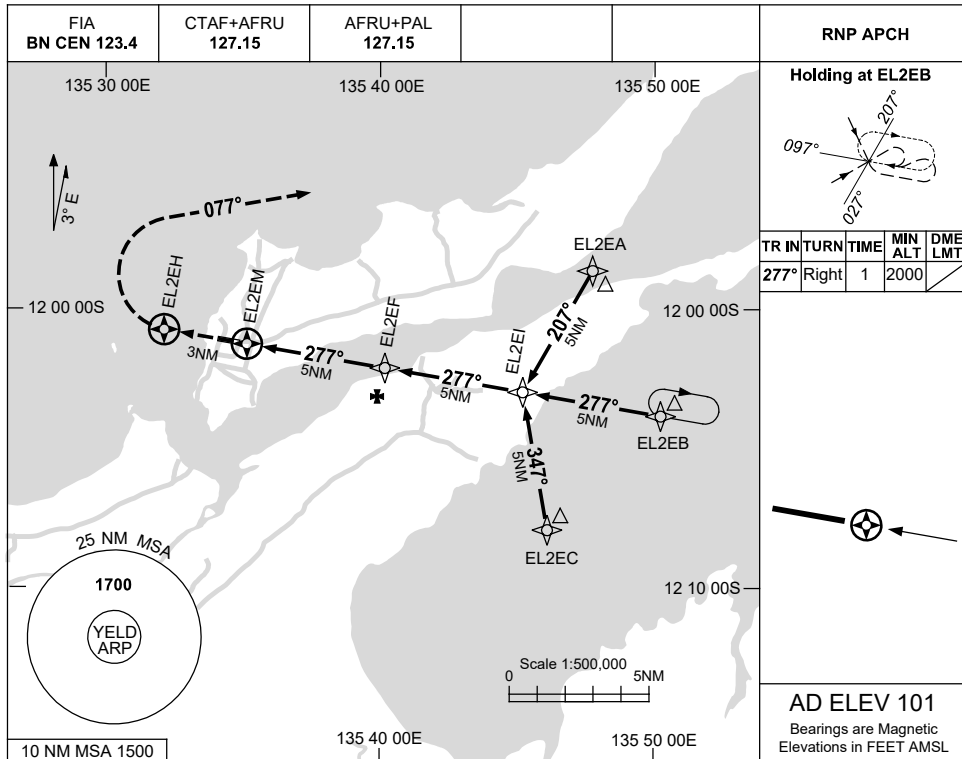


USE QNH

RNP RWY 28

8 SEP 2022

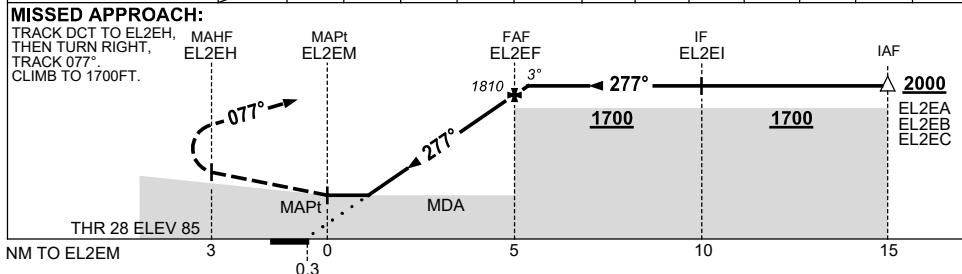
ELCHO ISLAND, NT (YELD)



TR	IN	TURN	TIME	MIN ALT	DME LMT
277°	Right	1	2000		

AD ELEV 101
Bearings are Magnetic
Elevations in FEET AMSL

NM TO NEXT WPT	EL2EM	1.5	2	3	4	EL2EF	0.6				
ALT (3° APCH PATH)		710	860	1180	1490	1810	2000				



NOTES

- MAX IAS: INITIAL : 210KT.

CATEGORY	A	B	C	D
LNAV	710 (625-3.6)			NOT APPLICABLE
CIRCLING	710 (609-2.4)	800 (699-4.0)		
ALTERNATE	(1109-4.4)		(1199-6.0)	

Changes: CHART TITLE, PBN SPECIFICATION BOX.

ELDGN02-172