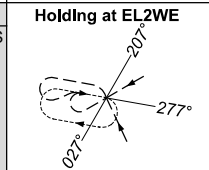
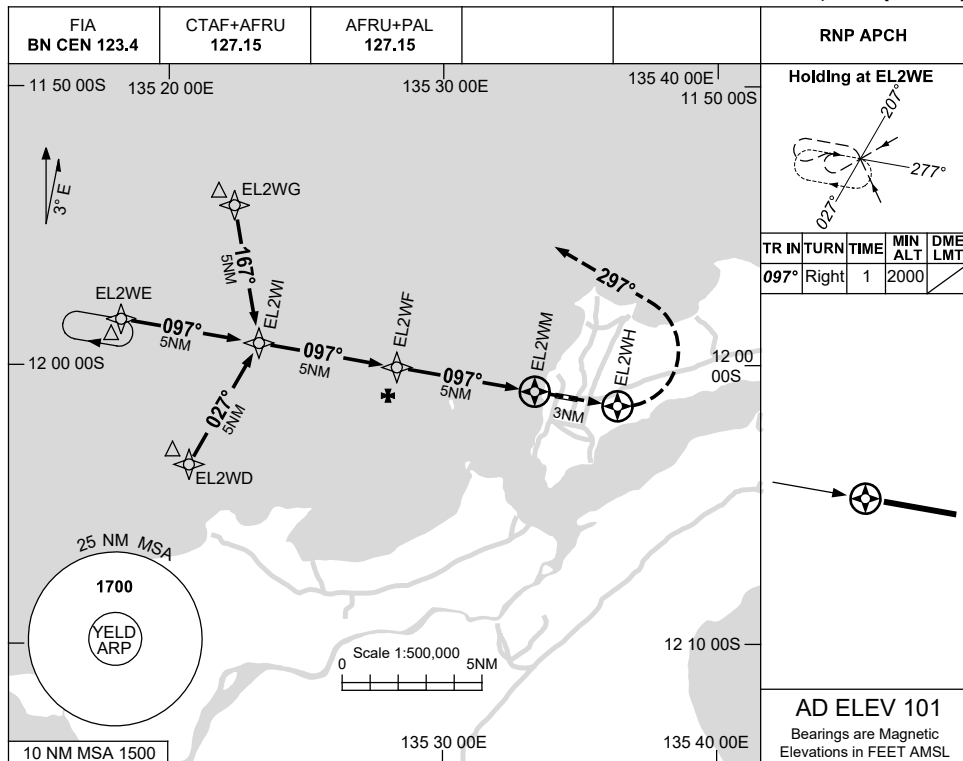


USE QNH

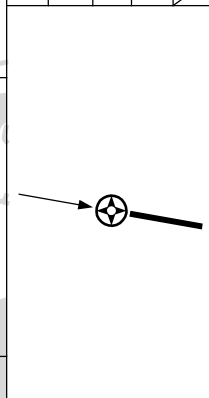
RNP RWY 10

ELCHO ISLAND, NT (YELD)

8 SEP 2022

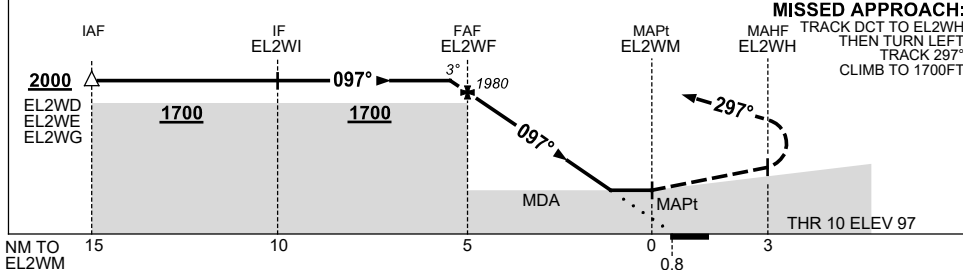


TR IN	TURN	TIME	MIN ALT	DME LMT
097°	Right	1	2000	



AD ELEV 101
Bearings are Magnetic
Elevations in FEET AMSL

NM TO NEXT WPT	0.1	EL2WF	4	3	2	1	EL2WM						
ALT (3° APCH PATH)	2000	1980	1660	1340	1020	710							



MISSED APPROACH:
TRACK DCT TO EL2WH,
THEN TURN LEFT,
TRACK 297°,
CLIMB TO 1700 FT.

NOTES

CATEGORY	A	B	C	D
LNAV	710 (609-3.5)			NOT APPLICABLE
CIRCLING	710 (609-2.4)	800 (699-4.0)		
ALTERNATE	(1109-4.4)		(1199-6.0)	

1. MAX IAS:
INITIAL : 210KT.

Changes: CHART TITLE, PBN SPECIFICATION BOX.

ELDGN01-172