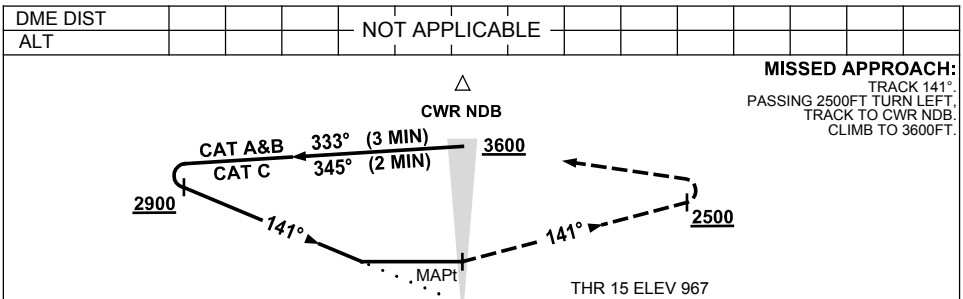
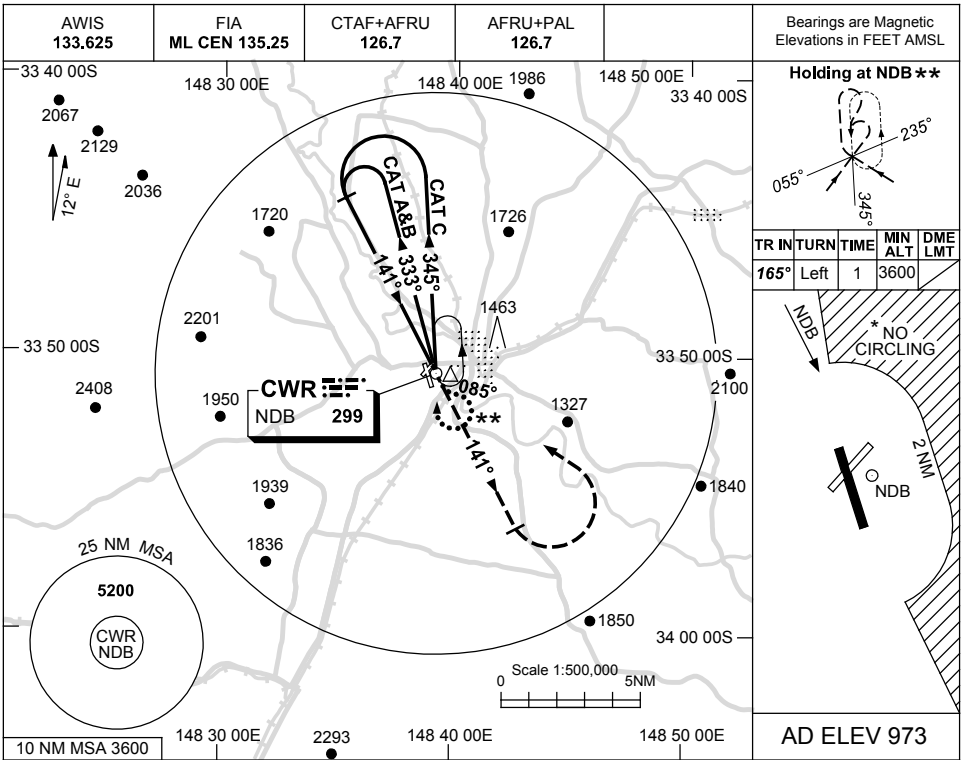


USE QNH

NDB RWY 15

23 MAY 2019

**COWRA, NSW (YCWR)**



**NOTES**

1. MAX IAS:  
HOLDING: 210KT.  
INITIAL:  
CAT C 210KT.
- \*2. NO CIRCLING E OF RWY 15/33 BEYOND 2NM.
- \*\*3. PROC TURN (80°/260°) RQ TO JOIN PROC FROM HOLD.

CATEGORY	A	B	C	D
S-I NDB	1850 (877-5.0)			NOT APPLICABLE **
CIRCLING *	1850 (877-2.4)	1850 (877-4.0)		
ALTERNATE	(1377-4.4)	(1377-6.0)		

Changes: CO-ORD FORMAT.

CWRNB01-159