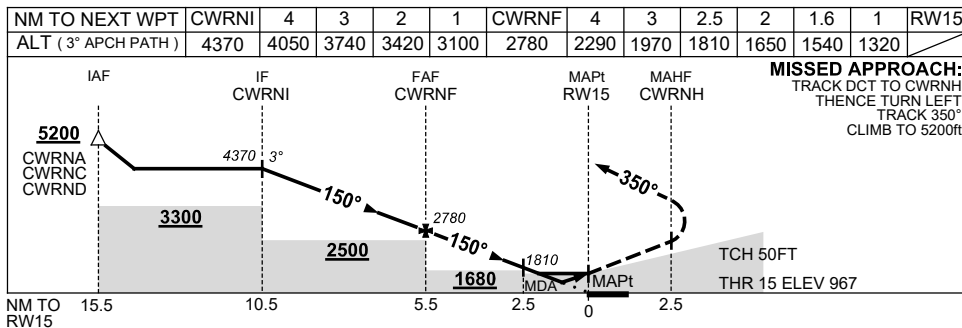
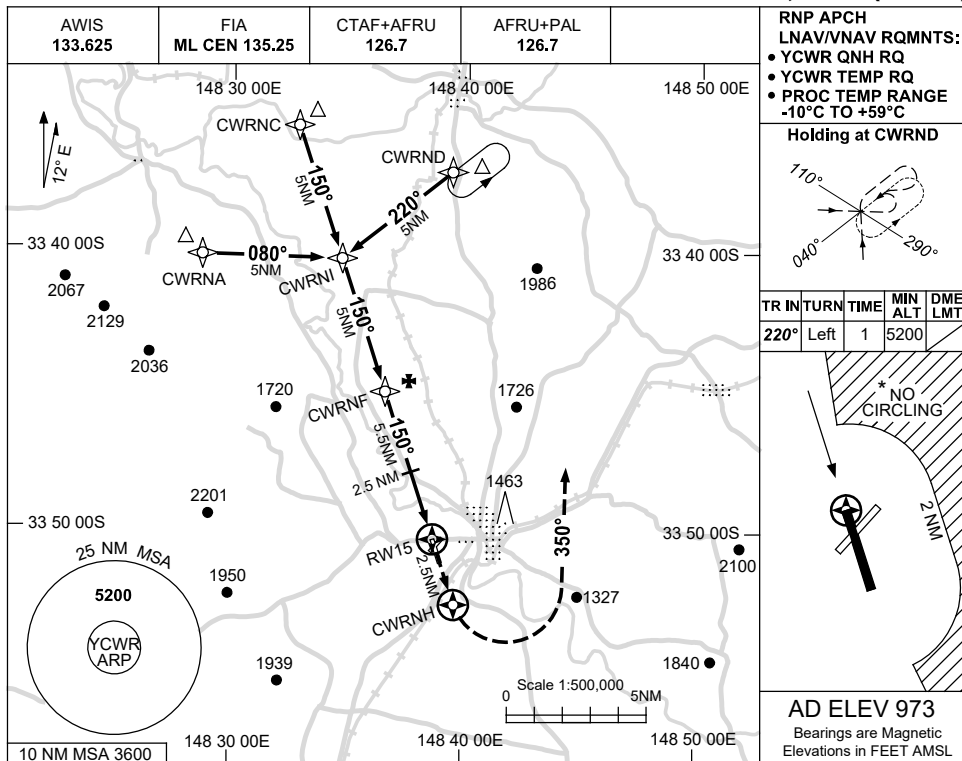


USE QNH

RNP RWY 15  
**COWRA, NSW (YCWR)**

21 MAR 2024



**NOTES**

CATEGORY	A	B	C	D
LNAV/VNAV		1320 (353-2.0)		NOT APPLICABLE
LNAV		1540 (567-3.2)		
CIRCLING *	1650 (677-2.4)		1810 (837-4.0)	
ALTERNATE	(1177-4.4)		(1337-6.0)	

- MAX IAS:  
INITIAL : 210KT.
- \*2. NO CIRCLING E OF RWY 15/33 BEYOND 2NM.

Changes: MODEL ACFT SYMBOL REMOVED, Editorial.

CWRGN01-178