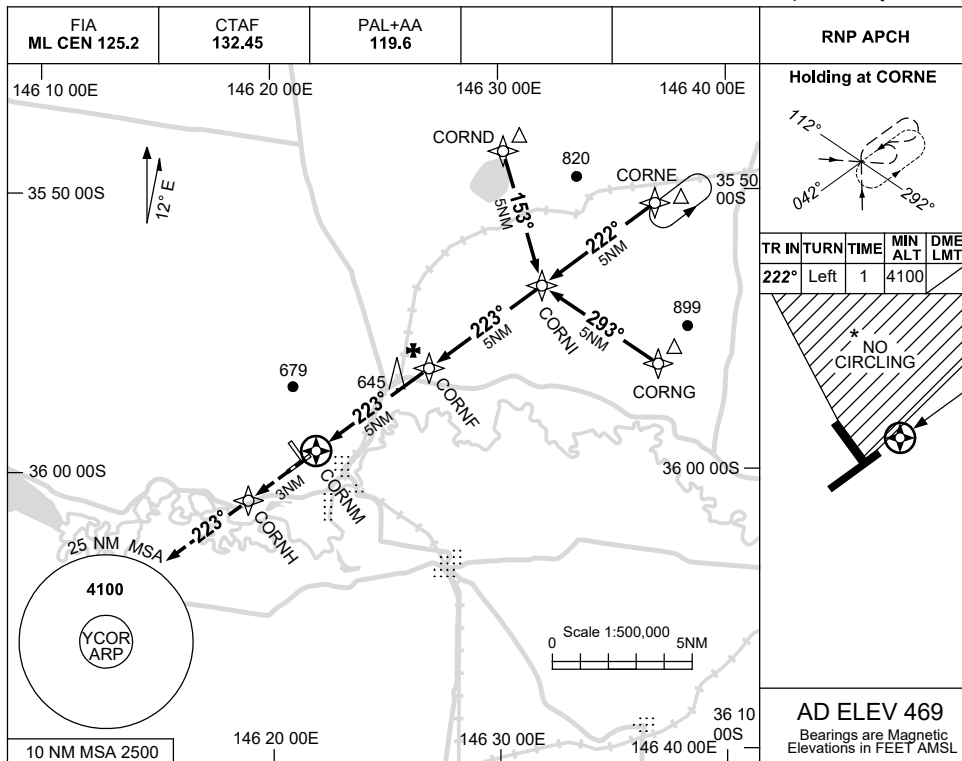


USE QNH

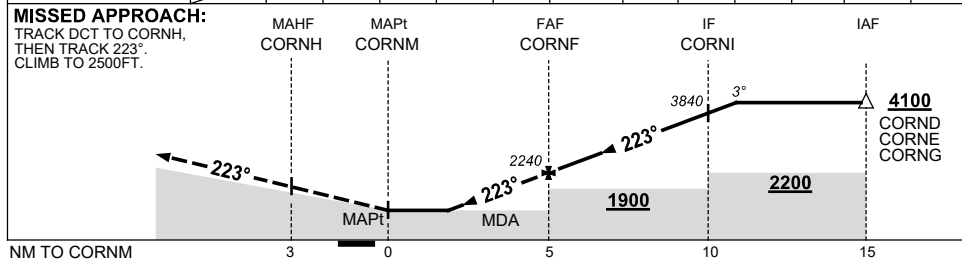
RNP E

23 MAR 2023

COROWA, NSW (YCOR)



NM TO NEXT WPT	CORNM	1.6	1.8	2	3	4	CORNF	1	2	3	4	CORNI	0.8
ALT (3° APCH PATH)		1170	1210	1290	1610	1930	2240	2560	2880	3200	3520	3840	4100



**NOTES**

CATEGORY	A	B	C	D
CIRCLING*	1170 (701-2.4)	1210 (741-4.0)		NOT APPLICABLE
ALTERNATE	(1201-4.4)	(1241-6.0)		

- MAX IAS: INITIAL : 210KT.
- NO CIRCLING IN SECTOR NE OF RWYS 05/23 AND 14/32.
- CAUTION: YYWG 15NM W.

Changes: CHART TITLE, PBN SPECIFICATION BOX.

CORGN02-174