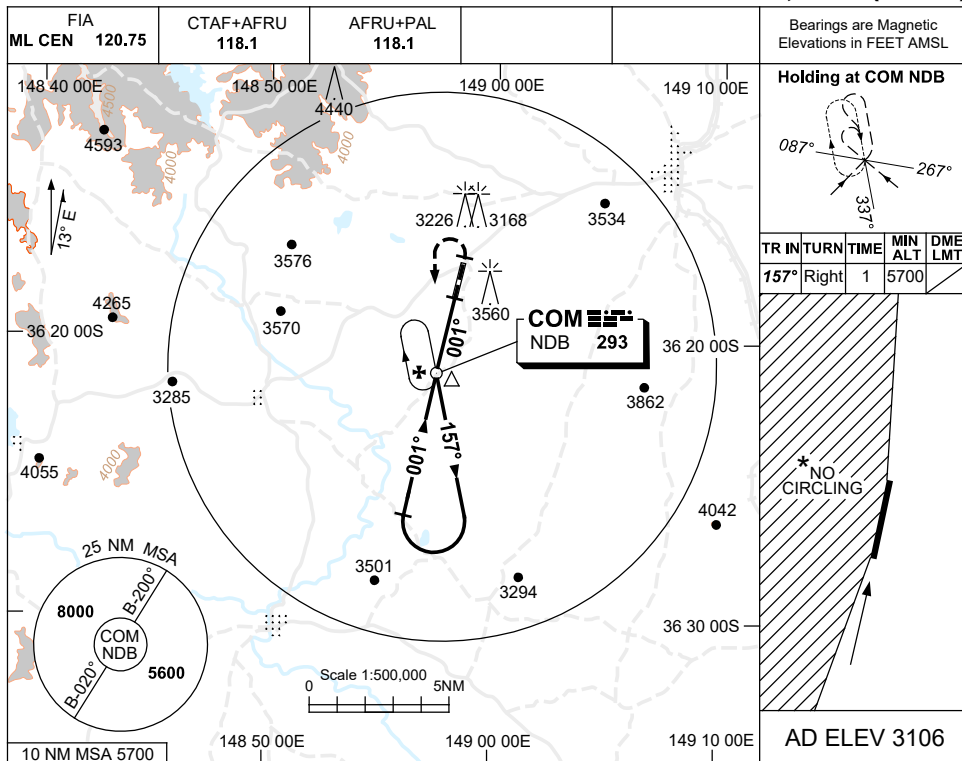
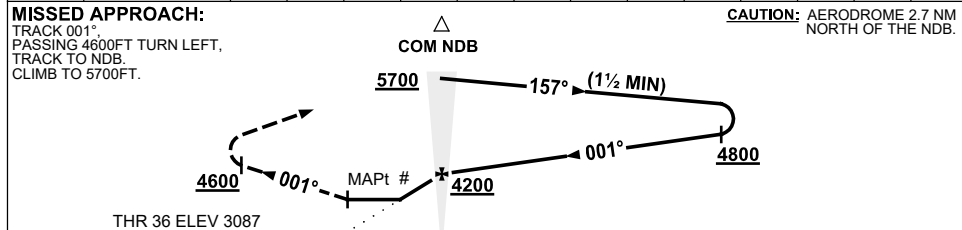


**USE QNH NDB-Y RWY 36
COOMA-SNOWY MOUNTAINS, NSW (YCOM)**

23 MAR 2023



NDB	GS (KNOTS)	60	70	80	90	100	110	120	130				
to MAPt	TIME (MIN:SEC)	2:45	2:22	2:04	1:50	1:39	1:30	1:23	1:17				



NOTES

CATEGORY	A	B	D
S-I NDB	3940 (853-4.2)		NOT APPLICABLE
CIRCLING *	4060 (954-2.4)		
ALTERNATE	(1454-4.4)		

*1. NO CIRCLING WEST OF RWY 18/36.
 #2. GRADIENT AFTER FAF 6.4% (390FT/NM).
 3. AWIS (PHONE) 02 9353 6414
 4. COLOUR: SEE SPEC NOTICES.

Changes: FIA COMNB02-174