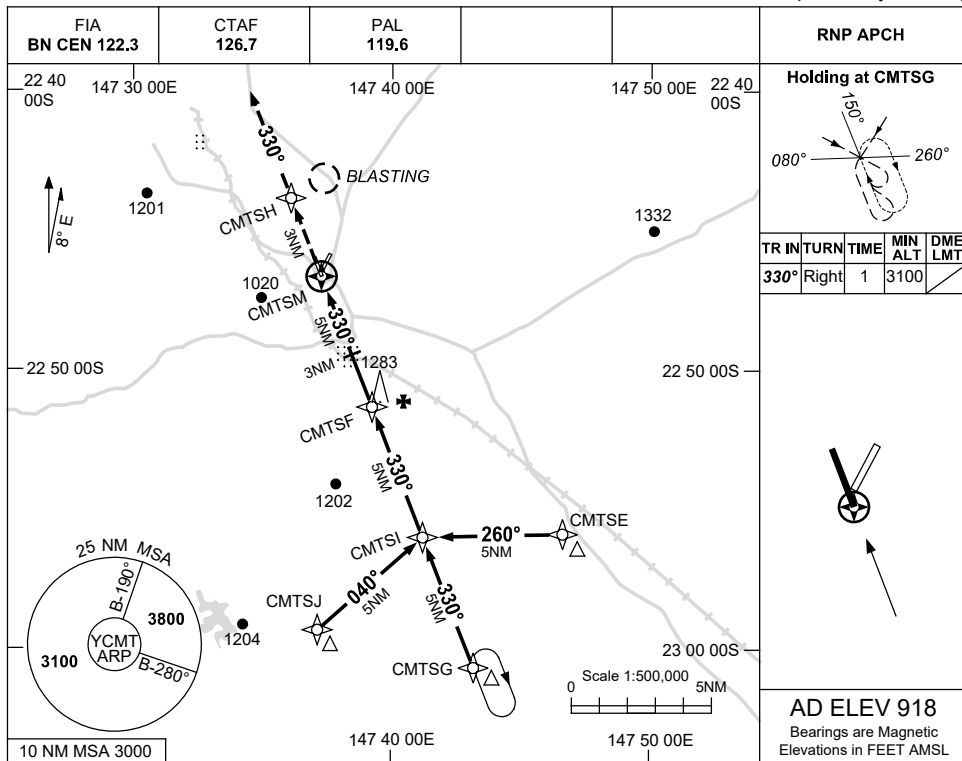


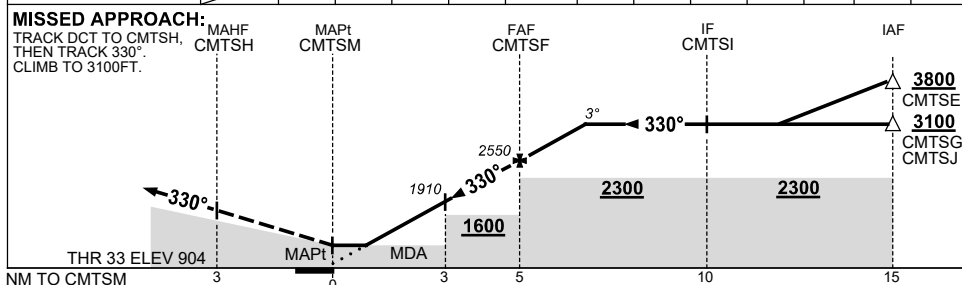
USE QNH

RNP RWY 33  
CLERMONT, QLD (YCMT)

8 SEP 2022



NM TO NEXT WPT	CMTSM	1.6	2	3	4	CMTSF	1	1.7					
ALT (3° APCH PATH)		1450	1590	1910	2230	2550	2860	3100					



**NOTES**

CATEGORY	A	B	C	D
LNAV	1450 (546-3.1)			NOT APPLICABLE
CIRCLING	1570 (652-2.4)	1780 (862-4.0)		
ALTERNATE	(1152-4.4)		(1362-6.0)	

- MAX IAS: INITIAL : 210KT.
- BLASTING BRG 010 MAG AND 3NM FM ARP BTN 2100 AND 0700 UTC DLY.

Changes: NOTE 2.

CMTGN02-172