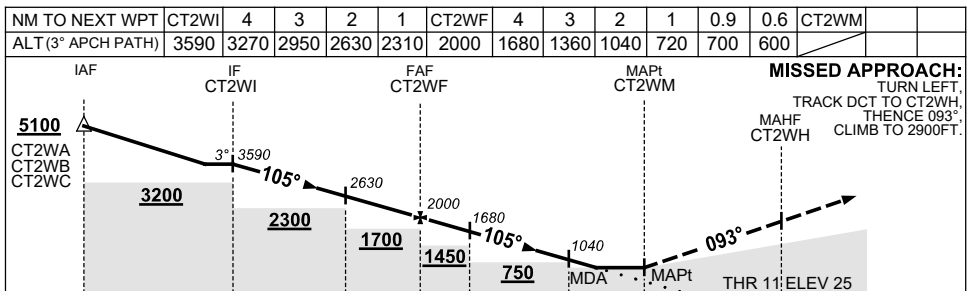
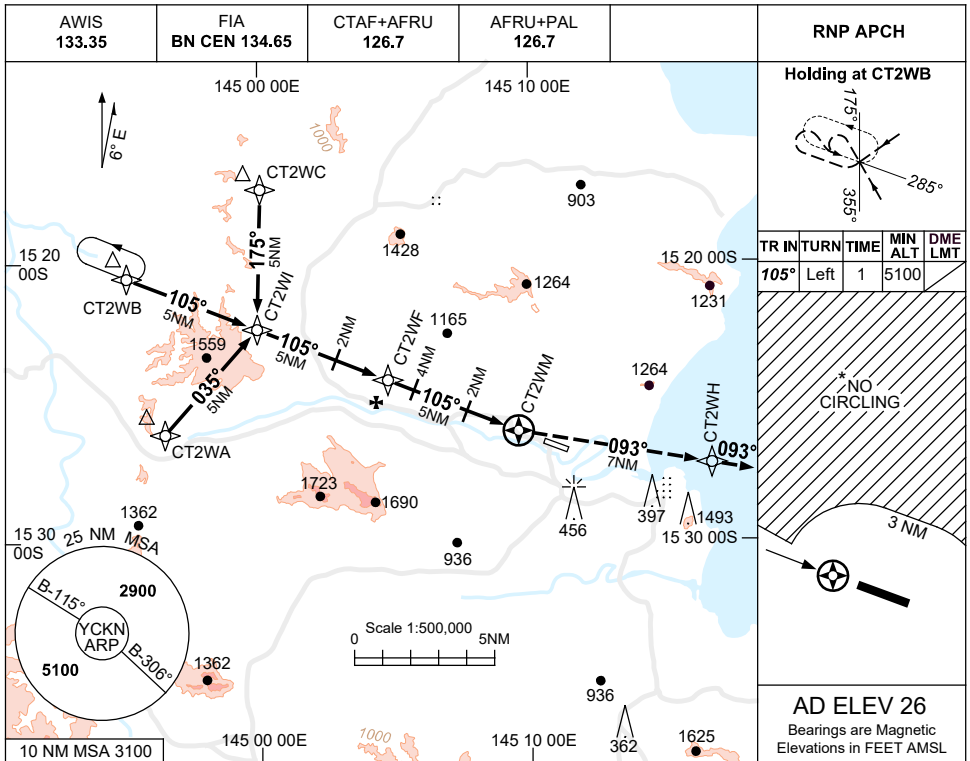


USE QNH

RNP RWY 11

1 DEC 2022

COOKTOWN, QLD (YCKN)



CATEGORY	A	B	C	D
LNAV (2.5% MAP)	700 (674-3.8)			NOT APPLICABLE
LNAV (3.1% MAP)#	600 (574-3.2)			
CIRCLING *	1080 (1054-2.4)		1500(1474-4.0)	
ALTERNATE	(1554-4.4)		(1974-6.0)	

NOTES
 1. MAX IAS: INITIAL : 210KT.
 *2. NO CIRCLING IN SECTOR NORTHWEST OF RWY 11 & RWY 29 BEYOND 3NM.
 #3. MIN MAP GRAD 3.1% TO 1100FT, THEN 2.5%.
 4. COLOUR: SEE SPEC NOTICES.

Changes: DIST/ALT TABLE.

CKNGN01-173