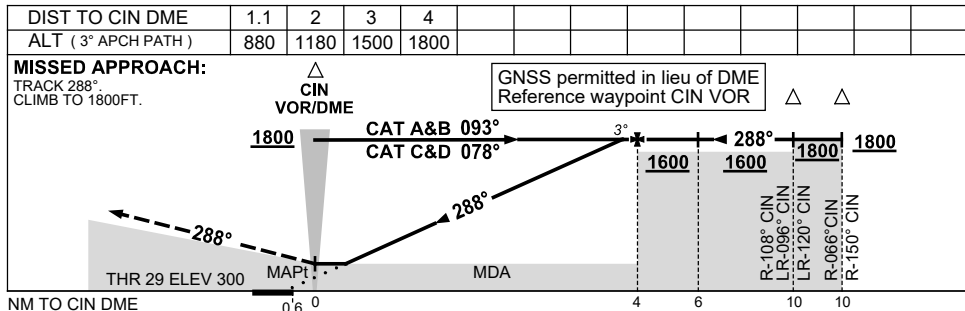
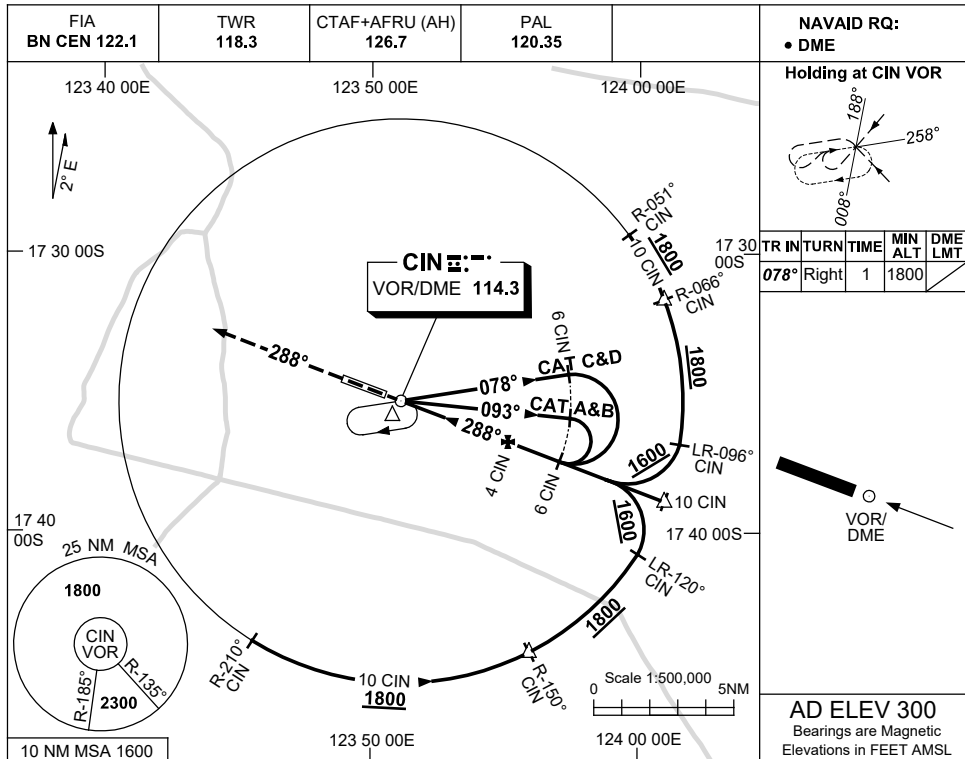


USE QNH

VOR-Z RWY 29  
CURTIN, WA (YCIN)

7 NOV 2019



**NOTES**

| CATEGORY    | A             | B              | C              | D |
|-------------|---------------|----------------|----------------|---|
| S-I VOR/DME | 880 (580-3.3) |                |                |   |
| CIRCLING    | 930 (630-2.4) | 1030 (730-4.0) | 1090 (790-5.0) |   |
| ALTERNATE   | (1130-4.4)    | (1230-6.0)     | (1290-7.0)     |   |

- MAX IAS:  
INITIAL : 210KT.
- AWIS (PHONE)  
08 6216 2609

Changes: PAL, CTAF-AFRU.

CINVO04-161