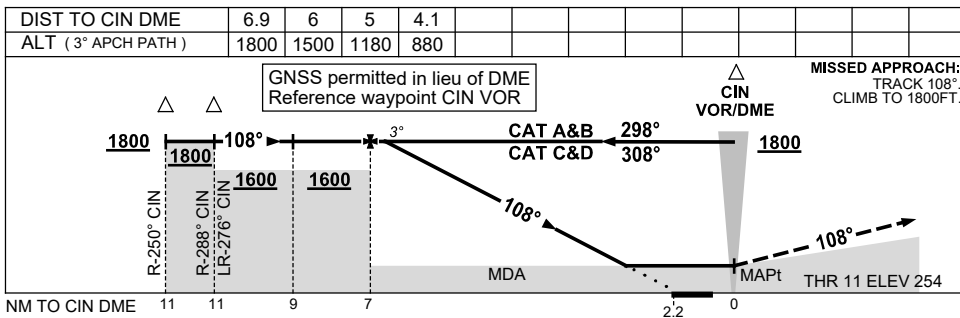
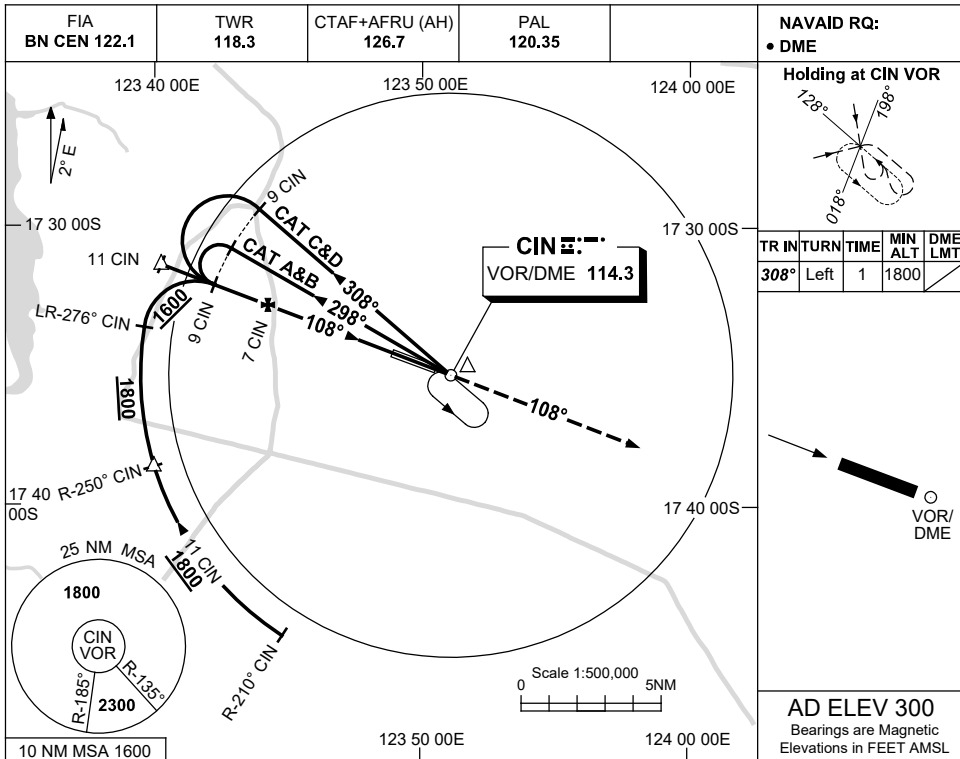


USE QNH

VOR-Z RWY 11
CURTIN, WA (YGIN)

7 NOV 2019



NOTES

- MAX IAS: INITIAL : 210KT.
- AWIS (PHONE) 08 6216 2609

CATEGORY	A	B	C	D
S-I VOR/DME	880 (626-3.6)			
CIRCLING	930 (630-2.4)	1030 (730-4.0)	1090 (790-5.0)	
ALTERNATE	(1130-4.4)	(1230-6.0)	(1290-7.0)	

Changes: PAL, CTAF-AFRU.

CINVO02-161