

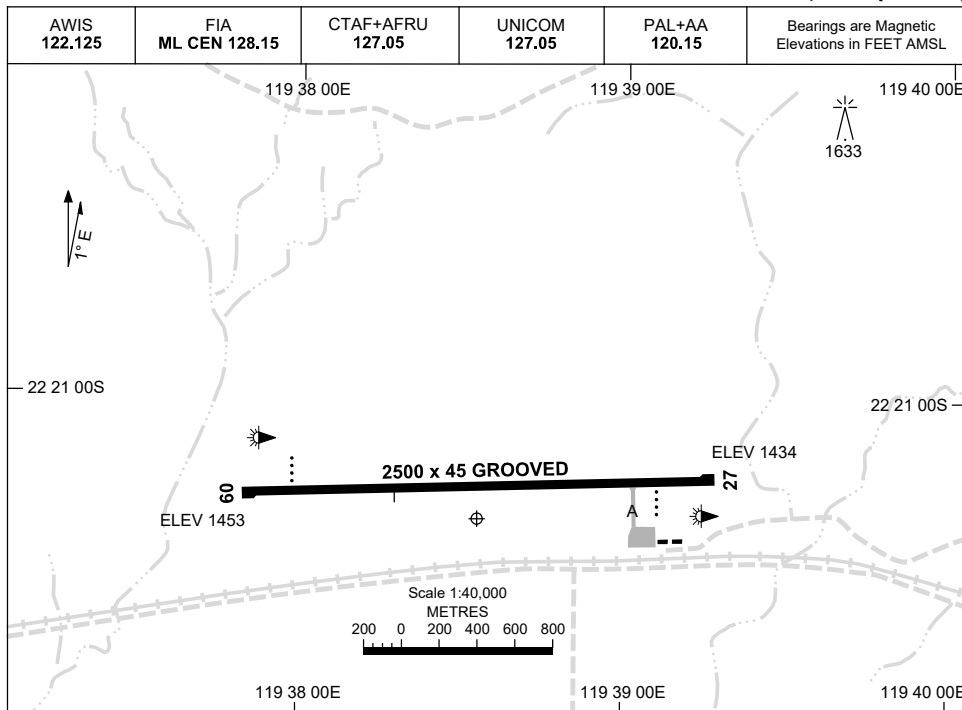
23 MAR 2023

AD ELEV 1454

AERODROME CHART - Page 1

22 21 21S 119 38 33E

**CHRISTMAS CREEK, WA (YCHK)**



	<b>AERODROME LIGHTING</b>
<b>RWY</b>	TAXIWAY : BLUE EDGE RL : PAL+AA 120.15 , SDBY (42 SEC)
<b>09</b> <small>087</small>	PAPI 3.0° 53FT LIRL
<small>267</small> <b>27</b>	PAPI 3.0° 53FT LIRL

**NOTES**

1. **CAUTION:** FORTESCUE DAVE FORREST (YDFD) AD 12NM TO WEST.
2. **CAUTION:** YDFD IS IN CLOSE PROXIMITY AND THE APCH/DEP TRACK CROSS CLOSE TO THE GROUND. DUE TO TERRAIN SCHIELDING, VHF CONTACT WITH ACFT ON OR CLOSE TO THE GROUND AT YDFD IS NOT POSSIBLE.
3. CTAF+AFRU NOT AVBL ON GROUND.  
CONFIRMATION BY UNICOM.
4. FIA FREQ 128.15 AVBL IN CIRCUIT AREA

Changes: THR ELEV, NOTES AND SDBY SWITCHOVER TIME.

CHKAD01-174