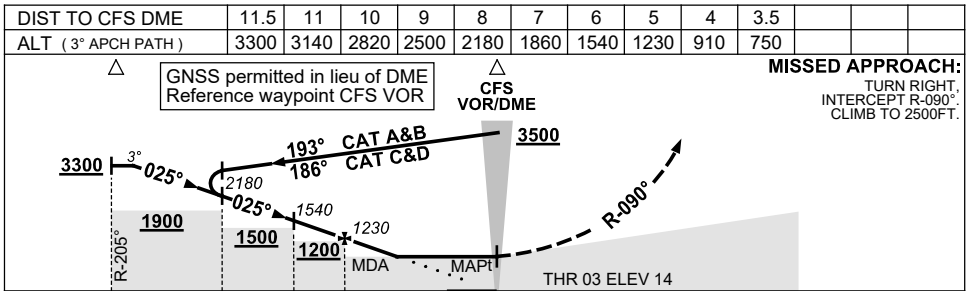
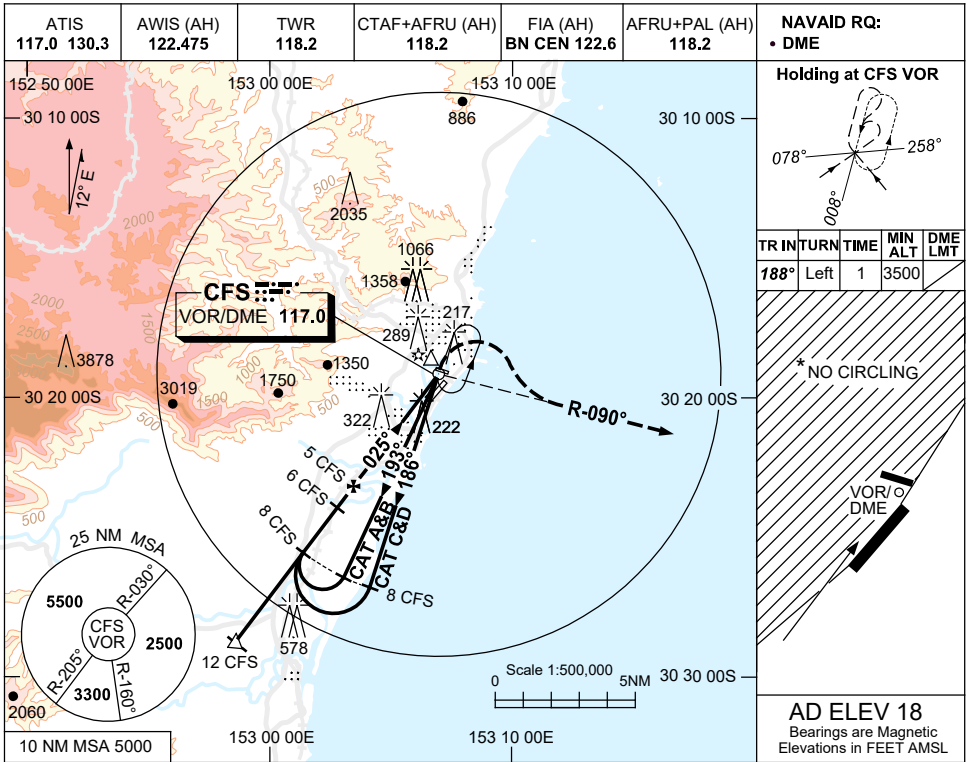


USE QNH

VOR RWY 03

27 FEB 2020

**COFFS HARBOUR, NSW (YCFS)**



CATEGORY	A	B	C	D
S-I VOR/DME	750 (732-4.2)			
CIRCLING *	800 (782-2.4)	890 (872-4.0)	890 (872-5.0)	
ALTERNATE	(1282-4.4)	(1372-6.0)	(1372-7.0)	

**NOTES**

- MAX IAS:  
INITIAL : 190KT.  
HOLDING: 210KT.
- NO CIRCLING  
W OF RWY 03/21.
- COLOUR:** SEE SPEC NOTICES.

**CAUTION**  
DISUSED RWY (TWY E)  
NTH OF RWY 21 THR.

Changes: FROM SUP H85/19, COORD FMT.

CFSV004-162