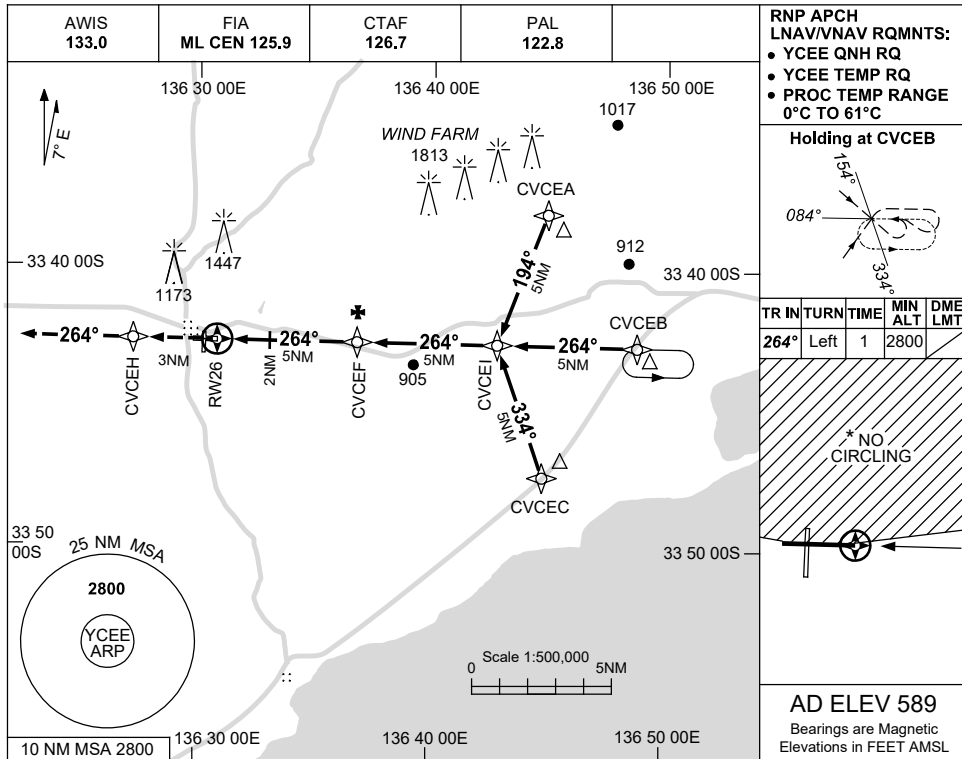


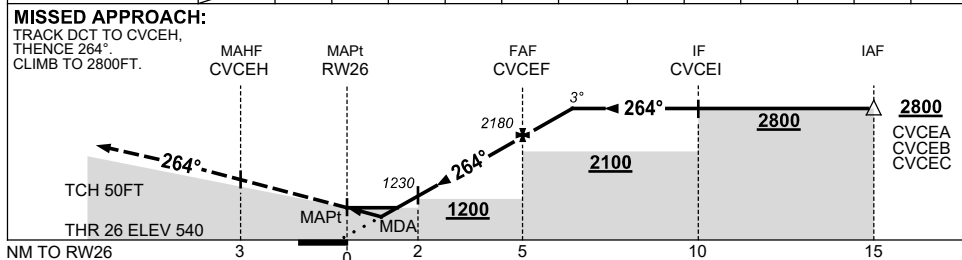
USE QNH

RNP RWY 26  
CLEVE, SA (YCEE)

1 DEC 2022



NM TO NEXT WPT	RW26	1.3	1.9	2	3	4	CVCEF	1	1.9			
ALT (3° APCH PATH)		990	1190	1230	1550	1860	2180	2500	2800			



**NOTES**

CATEGORY	A	B	C	D
LNAV/VNAV		990 (450-2.5)		NOT APPLICABLE
LNAV		1190 (650-3.7)		
CIRCLING *	1440 (851-2.4)		1530 (941-4.0)	
ALTERNATE	(1351-4.4)		(1441-6.0)	

- MAX IAS: INITIAL : 230KT.
- \*2. NO CIRCLING NORTH OF RWY 08/26.

Changes: CHART TITLE, PBN SPECIFICATION BOX.

CEEGN01-173